



Datasheet for ABIN202466
anti-CBX6 antibody (AA 321-370)



[Go to Product page](#)

1 Image

Overview

Quantity:	100 µL
Target:	CBX6
Binding Specificity:	AA 321-370
Reactivity:	Human, Mouse, Rat, Dog, Cow, Horse, Guinea Pig, Bat, Monkey
Host:	Rabbit
Clonality:	Polyclonal
Conjugate:	This CBX6 antibody is un-conjugated
Application:	Western Blotting (WB)

Product Details

Immunogen:	Synthetic peptide located between aa321-370 of human CBX6 (O95503, NP_055107). Percent identity by BLAST analysis: Human, Chimpanzee, Gorilla, Gibbon, Monkey, Galago, Mouse, Rat, Dog, Bovine, Bat, Horse, Guinea pig (100%), Xenopus (90%), Opossum, Turkey, Zebra finch (81%). Type of Immunogen: Synthetic peptide
Isotype:	IgG
Specificity:	Human CBX6
Predicted Reactivity:	Percent identity by BLAST analysis: Human, Mouse, Rat, Bovine (100%) Xenopus (90%).
Purification:	Protein A purified

Target Details

Target: CBX6

Alternative Name: CBX6 ([CBX6 Products](#))

Background: Name/Gene ID: CBX6

Synonyms: CBX6, Chromobox homolog 6, Chromobox protein homolog 6

Gene ID: 23466

NCBI Accession: [NP_055107](#)

UniProt: [O95503](#)

Application Details

Application Notes: Approved: WB (5 µg/mL)

Comment: Target Species of Antibody: Human

Restrictions: For Research Use only

Handling

Format: Lyophilized

Reconstitution: After adding water, will consist of PBS buffer with 2 % sucrose

Concentration: Lot specific

Buffer: Lyophilized from PBS with 2 % sucrose

Handling Advice: Avoid repeat freeze-thaw cycles.

Storage: 4 °C, -20 °C

Storage Comment: Long term: -20°C, the use of 50% glycerol is recommended if storing aliquots in -20°C for long term use (up to 1 year)
Short term (less than 1 week): 4°C. Avoid freeze-thaw cycles.

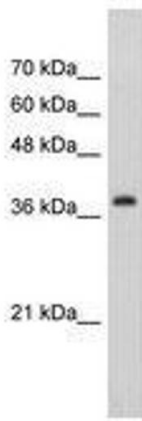


Image 1.