



[Go to Product page](#)

Datasheet for ABIN202492
anti-SF3B4 antibody (N-Term)

2 Images

Overview

Quantity:	100 µL
Target:	SF3B4
Binding Specificity:	N-Term
Reactivity:	Human, Mouse, Rat, Cow, Dog, Zebrafish (Danio rerio), Pig, Rabbit, Guinea Pig, Horse, Chicken, Hamster, Monkey, Xenopus laevis, Bat
Host:	Rabbit
Clonality:	Polyclonal
Conjugate:	This SF3B4 antibody is un-conjugated
Application:	Western Blotting (WB), Immunohistochemistry (IHC), Immunohistochemistry (Paraffin-embedded Sections) (IHC (p))

Product Details

Immunogen:	Synthetic peptide from N-Terminus of human SF3B4 (Q15427, NP_005841). Percent identity by BLAST analysis: Human, Chimpanzee, Gorilla, Gibbon, Monkey, Galago, Marmoset, Mouse, Rat, Hamster, Elephant, Dog, Bovine, Bat, Rabbit, Horse, Pig, Opossum, Guinea pig, Turkey, Zebra finch, Chicken, Xenopus, Stickleback, Zebrafish (100%), Drosophila, Rice, Beetle, Grape (85%). Type of Immunogen: Synthetic peptide
Isotype:	IgG
Specificity:	Human SF3B4
Predicted Reactivity:	Percent identity by BLAST analysis: Human, Mouse, Rat, Dog, Bovine, Rabbit, Horse, Pig,

Product Details

Xenopus, Zebrafish (100%).

Purification: Protein A purified

Target Details

Target: SF3B4

Alternative Name: SF3B4 ([SF3B4 Products](#))

Background: Name/Gene ID: SF3B4

Synonyms: SF3B4, AFD1, Hsh49, SAP 49, Spliceosomal protein, SF3b50, SAP49, SF3b49, Splicing factor 3B subunit 4

Gene ID: 10262

NCBI Accession: [NP_005841](#)

UniProt: [Q15427](#)

Application Details

Application Notes: Approved: IHC, IHC-P, WB (1.25 µg/mL)

Comment: Target Species of Antibody: Human

Restrictions: For Research Use only

Handling

Format: Lyophilized

Reconstitution: After adding water, will consist of PBS buffer with 2 % sucrose

Concentration: Lot specific

Buffer: Lyophilized from PBS with 2 % sucrose

Handling Advice: Avoid repeat freeze-thaw cycles.

Storage: 4 °C, -20 °C

Storage Comment: Long term: -20°C, the use of 50% glycerol is recommended if storing aliquots in -20°C for long term use (up to 1 year)

Short term (less than 1 week): 4°C. Avoid freeze-thaw cycles.

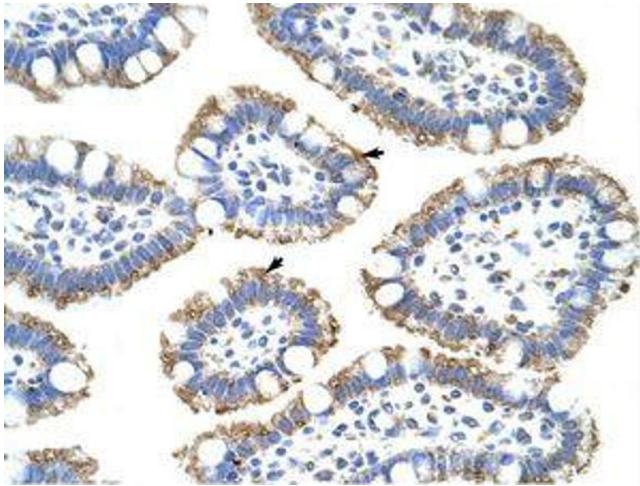


Image 1.

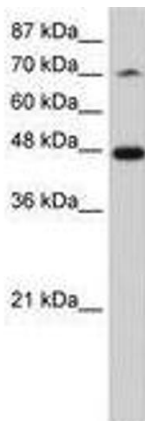


Image 2.