



Datasheet for ABIN202506
anti-MANSC1 antibody (N-Term)



[Go to Product page](#)

2 Images

Overview

Quantity:	100 µL
Target:	MANSC1
Binding Specificity:	N-Term
Reactivity:	Human, Cow
Host:	Rabbit
Clonality:	Polyclonal
Conjugate:	This MANSC1 antibody is un-conjugated
Application:	Western Blotting (WB), Immunohistochemistry (IHC), Immunohistochemistry (Paraffin-embedded Sections) (IHC (p))

Product Details

Immunogen:	Synthetic peptide from N-Terminus of human MANSC1 (Q9H8J5, NP_060520). Percent identity by BLAST analysis: Human, Gorilla, Galago (100%), Orangutan, Monkey (92%), Marmoset, Horse (91%), Elephant, Bovine (83%). Type of Immunogen: Synthetic peptide
Isotype:	IgG
Specificity:	Human MANSC1
Predicted Reactivity:	Percent identity by BLAST analysis: Human (100%) Horse (91%) Bovine (83%).
Purification:	Protein A purified

Target Details

Target:	MANSC1
Alternative Name:	MANSC1 (MANSC1 Products)
Background:	Name/Gene ID: MANSC1 Synonyms: MANSC1, LOH12CR3, MANSC domain containing 1
Gene ID:	54682
NCBI Accession:	NP_060520
UniProt:	Q9H8J5

Application Details

Application Notes:	Approved: IHC, IHC-P, WB (5 µg/mL)
Comment:	Target Species of Antibody: Human
Restrictions:	For Research Use only

Handling

Format:	Lyophilized
Reconstitution:	After adding water, will consist of PBS buffer with 2 % sucrose
Concentration:	Lot specific
Buffer:	Lyophilized from PBS with 2 % sucrose
Handling Advice:	Avoid repeat freeze-thaw cycles.
Storage:	4 °C, -20 °C
Storage Comment:	Long term: -20°C, the use of 50% glycerol is recommended if storing aliquots in -20°C for long term use (up to 1 year) Short term (less than 1 week): 4°C. Avoid freeze-thaw cycles.

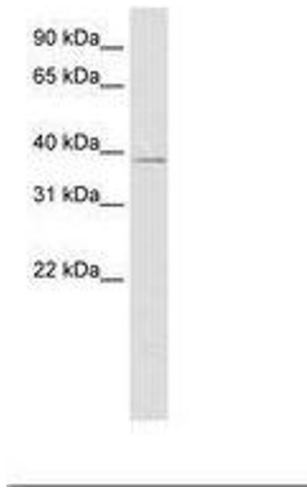


Image 1.

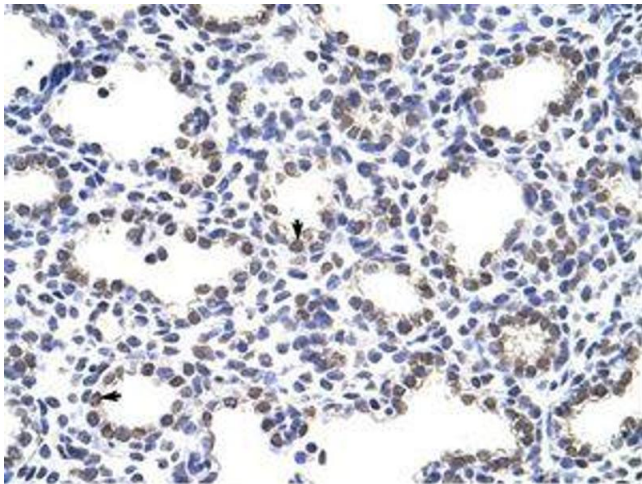


Image 2.