



[Go to Product page](#)

Datasheet for ABIN202510

anti-CCRN4L antibody (AA 82-131)

2 Images

Overview

| | |
|----------------------|--|
| Quantity: | 100 µL |
| Target: | CCRN4L |
| Binding Specificity: | AA 82-131 |
| Reactivity: | Human, Rat, Cow, Guinea Pig, Horse, Bat, Monkey |
| Host: | Rabbit |
| Clonality: | Polyclonal |
| Conjugate: | This CCRN4L antibody is un-conjugated |
| Application: | Western Blotting (WB), Immunohistochemistry (Paraffin-embedded Sections) (IHC (p)), Immunohistochemistry (IHC) |

Product Details

| | |
|-----------------------|---|
| Immunogen: | Synthetic peptide located between aa82-131 of human CCRN4L (Q9UK39, NP_036250). Percent identity by BLAST analysis: Human, Chimpanzee, Gibbon, Monkey, Marmoset, Rat, Elephant, Bovine, Bat, Horse, Guinea pig (100%), Mouse, Dog, Rabbit (92%), Galago (85%). Type of Immunogen: Synthetic peptide |
| Isotype: | IgG |
| Specificity: | Human CCRN4L |
| Predicted Reactivity: | Percent identity by BLAST analysis: Human, Bovine, Horse (100%) Mouse, Rat, Dog, Rabbit (92%). |
| Purification: | Protein A purified |

Target Details

| | |
|-------------------|---|
| Target: | CCRN4L |
| Alternative Name: | CCRN4L / Nocturnin (CCRN4L Products) |
| Background: | Name/Gene ID: CCRN4L Synonyms: CCRN4L, CCR4 protein homolog, CCR4L, NOC, Nocturnin |
| Gene ID: | 25819 |
| NCBI Accession: | NP_036250 |
| UniProt: | Q9UK39 |
| Pathways: | Ribonucleoprotein Complex Subunit Organization |

Application Details

| | |
|--------------------|--|
| Application Notes: | Approved: IHC, IHC-P, WB (1 - 2 µg/mL) |
| Comment: | Target Species of Antibody: Human |
| Restrictions: | For Research Use only |

Handling

| | |
|------------------|---|
| Format: | Lyophilized |
| Reconstitution: | After adding water, will consist of PBS buffer with 2 % sucrose |
| Concentration: | Lot specific |
| Buffer: | Lyophilized from PBS with 2 % sucrose |
| Handling Advice: | Avoid repeat freeze-thaw cycles. |
| Storage: | 4 °C,-20 °C |
| Storage Comment: | Long term: -20°C, the use of 50% glycerol is recommended if storing aliquots in -20°C for long term use (up to 1 year) Short term (less than 1 week): 4°C. Avoid freeze-thaw cycles. |

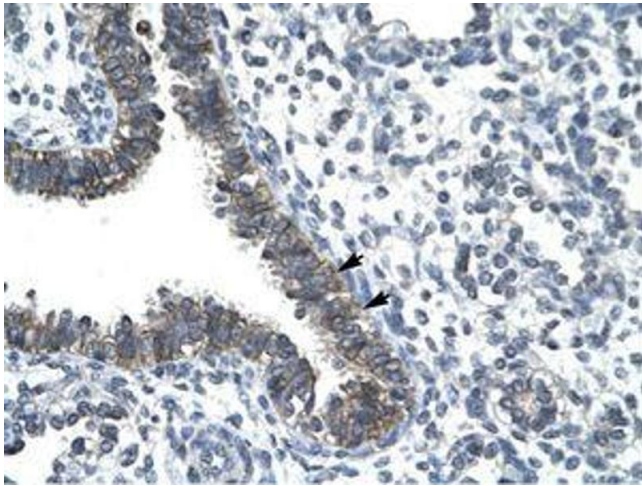


Image 1.



Image 2.