



[Go to Product page](#)

Datasheet for ABIN202569  
**anti-FEZF2 antibody (N-Term)**

1 Image

Overview

Quantity:	100 µL
Target:	FEZF2
Binding Specificity:	N-Term
Reactivity:	Human, Mouse, Rat, Dog, Cow, Guinea Pig, Horse, Rabbit, Bat, Hamster, Monkey, Pig
Host:	Rabbit
Clonality:	Polyclonal
Conjugate:	This FEZF2 antibody is un-conjugated
Application:	Western Blotting (WB)

Product Details

Immunogen:	Synthetic peptide from N-Terminus of human FEZF2 (Q8TBJ5, NP_060478). Percent identity by BLAST analysis: Human, Chimpanzee, Gorilla, Gibbon, Monkey, Galago, Marmoset, Mouse, Rat, Hamster, Elephant, Zebu, Dog, Bovine, Bat, Rabbit, Horse, Pig, Guinea pig (100%), Opossum (92%).  Type of Immunogen: Synthetic peptide
Isotype:	IgG
Specificity:	Human FEZF2
Predicted Reactivity:	Percent identity by BLAST analysis: Human, Mouse, Rat, Bovine, Dog (100%).
Purification:	Protein A purified

## Target Details

---

Target:	FEZF2
Alternative Name:	FEZL / FEZF2 ( <a href="#">FEZF2 Products</a> )
Background:	Name/Gene ID: FEZF2  Synonyms: FEZF2, FEZ family zinc finger 2, FEZL, FKSG36, TOF, ZNF312, ZFP312, Zinc finger protein 312, Zinc finger protein Fez-like, FEZ
Gene ID:	55079
NCBI Accession:	<a href="#">NP_060478</a>
UniProt:	<a href="#">Q8TBJ5</a>

## Application Details

---

Application Notes:	Approved: WB (2.5 µg/mL)
Comment:	Target Species of Antibody: Human
Restrictions:	For Research Use only

## Handling

---

Format:	Lyophilized
Reconstitution:	After adding water, will consist of PBS buffer with 2 % sucrose
Concentration:	Lot specific
Buffer:	Lyophilized from PBS with 2 % sucrose
Handling Advice:	Avoid repeat freeze-thaw cycles.
Storage:	4 °C, -20 °C
Storage Comment:	Long term: -20°C, the use of 50% glycerol is recommended if storing aliquots in -20°C for long term use (up to 1 year)  Short term (less than 1 week): 4°C. Avoid freeze-thaw cycles.

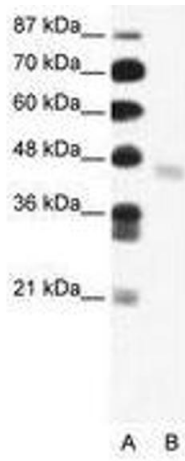


Image 1.