



[Go to Product page](#)

Datasheet for ABIN202574

anti-Coronin 1a antibody (N-Term)

1 Image

Overview

Quantity:	100 µL
Target:	Coronin 1a (CORO1A)
Binding Specificity:	N-Term
Reactivity:	Human, Mouse, Rat, Cow, Dog, Horse, Pig, Guinea Pig, Monkey, Zebrafish (Danio rerio), Bat
Host:	Rabbit
Clonality:	Polyclonal
Conjugate:	This Coronin 1a antibody is un-conjugated
Application:	Western Blotting (WB)

Product Details

Immunogen:	Synthetic peptide from N-Terminus of human CORO1A (Q2YD73, NP_009005). Percent identity by BLAST analysis: Human, Chimpanzee, Gorilla, Gibbon, Monkey, Galago, Marmoset, Mouse, Rat, Elephant, Panda, Dog, Bovine, Bat, Horse, Pig, Opossum, Guinea pig (100%), Rabbit, Turkey, Zebra finch, Platypus (92%), Orangutan, Hamster, Lizard, Xenopus, Salmon, Sablefish, Zebrafish (85%). Type of Immunogen: Synthetic peptide
Isotype:	IgG
Specificity:	Human CORO1A
Predicted Reactivity:	Percent identity by BLAST analysis: Human, Mouse, Dog, Horse, Pig (100%) Zebrafish (85%).
Purification:	Protein A purified

Target Details

Target:	Coronin 1a (CORO1A)
Alternative Name:	CORO1A / p57 (CORO1A Products)
Background:	Name/Gene ID: CORO1A Synonyms: CORO1A, Clipin-A, Coronin-like protein A, Coronin-like protein p57, CLIPINA, Coronin-1, Coronin-1A, HCORO1, p57, TACO, CLABP, CORO1
Gene ID:	11151
NCBI Accession:	NP_009005
UniProt:	P31146
Pathways:	Regulation of Actin Filament Polymerization

Application Details

Application Notes:	Approved: WB (2.5 µg/mL)
Comment:	Target Species of Antibody: Human
Restrictions:	For Research Use only

Handling

Format:	Lyophilized
Reconstitution:	After adding water, will consist of PBS buffer with 2 % sucrose
Concentration:	Lot specific
Buffer:	Lyophilized from PBS with 2 % sucrose
Handling Advice:	Avoid repeat freeze-thaw cycles.
Storage:	4 °C,-20 °C
Storage Comment:	Long term: -20°C, the use of 50% glycerol is recommended if storing aliquots in -20°C for long term use (up to 1 year) Short term (less than 1 week): 4°C. Avoid freeze-thaw cycles.

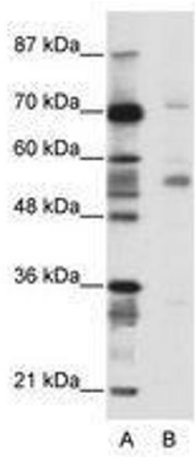


Image 1.