



[Go to Product page](#)

Datasheet for ABIN202578  
**anti-NFIL3 antibody (N-Term)**

1 Image

Overview

Quantity:	100 µL
Target:	NFIL3
Binding Specificity:	N-Term
Reactivity:	Human, Cow, Monkey, Sheep, Pig
Host:	Rabbit
Clonality:	Polyclonal
Conjugate:	This NFIL3 antibody is un-conjugated
Application:	Western Blotting (WB)

Product Details

Immunogen:	Synthetic peptide from N-Terminus of human NFIL3 (Q14211, NP_005375). Percent identity by BLAST analysis: Human, Gorilla, Gibbon, Monkey, Marmoset (100%), Galago (92%), Dog, Bovine (85%), Panda (84%).  Type of Immunogen: Synthetic peptide
Isotype:	IgG
Specificity:	Human NFIL3
Predicted Reactivity:	Percent identity by BLAST analysis: Human (100%) Bovine (85%).
Purification:	Protein A purified

## Target Details

---

Target: NFIL3

Alternative Name: NFIL3 ([NFIL3 Products](#))

Background: Name/Gene ID: NFIL3

Synonyms: NFIL3, E4 promoter-binding protein 4, E4BP4, NF-IL3A, NFIL3A, IL3BP1

Gene ID: 4783

NCBI Accession: [NP\\_005375](#)

UniProt: [Q16649](#)

## Application Details

---

Application Notes: Approved: WB (1.25 µg/mL)

Comment: Target Species of Antibody: Human

Restrictions: For Research Use only

## Handling

---

Format: Lyophilized

Reconstitution: After adding water, will consist of PBS buffer with 2 % sucrose

Concentration: Lot specific

Buffer: Lyophilized from PBS with 2 % sucrose

Handling Advice: Avoid repeat freeze-thaw cycles.

Storage: 4 °C, -20 °C

Storage Comment: Long term: -20°C, the use of 50% glycerol is recommended if storing aliquots in -20°C for long term use (up to 1 year)

Short term (less than 1 week): 4°C. Avoid freeze-thaw cycles.

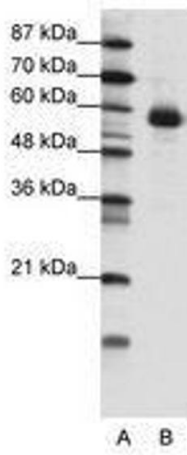


Image 1.