

Datasheet for ABIN202584
anti-Oct-2 antibody (AA 26-75)



[Go to Product page](#)

1 Image

Overview

Quantity:	100 µL
Target:	Oct-2 (POU2F2)
Binding Specificity:	AA 26-75
Reactivity:	Human, Mouse, Rat, Dog, Pig, Monkey, Guinea Pig, Rabbit, Horse, Bat
Host:	Rabbit
Clonality:	Polyclonal
Conjugate:	This Oct-2 antibody is un-conjugated
Application:	Western Blotting (WB)

Product Details

Immunogen:	Synthetic peptide located between aa26-75 of human POU2F2 (P09086-4, NP_002689). Percent identity by BLAST analysis: Human, Chimpanzee, Gorilla, Gibbon, Monkey, Galago, Marmoset, Mouse, Rat, Elephant, Dog, Bat, Horse, Pig, Guinea pig (100%), Bovine (92%), Rabbit (85%). Type of Immunogen: Synthetic peptide
Isotype:	IgG
Specificity:	Human POU2F2 / Oct-2
Predicted Reactivity:	Percent identity by BLAST analysis: Human, Rat, Dog, Horse, Guinea pig (100%) Bovine (92%) Rabbit (85%).
Purification:	Protein A purified

Target Details

Target:	Oct-2 (POU2F2)
Alternative Name:	POU2F2 / OCT2 (POU2F2 Products)
Background:	Name/Gene ID: POU2F2 Synonyms: POU2F2, Homeobox protein, Oct-2, OCT2, Octamer-binding protein 2, OTF-2, OTF2, POU class 2 homeobox 2
Gene ID:	5452
NCBI Accession:	NP_002689
UniProt:	P09086

Application Details

Application Notes:	Approved: WB (1.25 µg/mL)
Comment:	Target Species of Antibody: Human
Restrictions:	For Research Use only

Handling

Format:	Lyophilized
Reconstitution:	After adding water, will consist of PBS buffer with 2 % sucrose
Concentration:	Lot specific
Buffer:	Lyophilized from PBS with 2 % sucrose
Handling Advice:	Avoid repeat freeze-thaw cycles.
Storage:	4 °C, -20 °C
Storage Comment:	Long term: -20°C, the use of 50% glycerol is recommended if storing aliquots in -20°C for long term use (up to 1 year) Short term (less than 1 week): 4°C. Avoid freeze-thaw cycles.

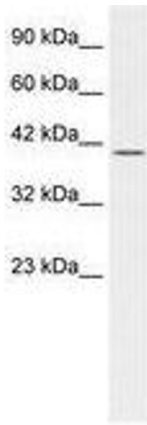


Image 1.