



Datasheet for ABIN202591
anti-TRIM15 antibody (AA 141-190)



[Go to Product page](#)

3 Images

Overview

Quantity:	100 µL
Target:	TRIM15
Binding Specificity:	AA 141-190
Reactivity:	Human, Cow, Horse, Monkey
Host:	Rabbit
Clonality:	Polyclonal
Conjugate:	This TRIM15 antibody is un-conjugated
Application:	Western Blotting (WB), Immunohistochemistry (IHC), Immunohistochemistry (Paraffin-embedded Sections) (IHC (p))

Product Details

Immunogen:	Synthetic peptide located between aa141-190 of human TRIM15 (Q9C019, NP_150232). Percent identity by BLAST analysis: Human, Chimpanzee, Gorilla, Gibbon, Marmoset (100%), Mouse (92%), Monkey, Bovine, Rabbit, Horse (85%). Type of Immunogen: Synthetic peptide
Isotype:	IgG
Specificity:	Human TRIM15
Predicted Reactivity:	Percent identity by BLAST analysis: Human (100%) Mouse (92%) Bovine, Horse (85%).
Purification:	Protein A purified

Target Details

Target:	TRIM15
Alternative Name:	TRIM15 / RNF93 (TRIM15 Products)
Background:	Name/Gene ID: TRIM15 Family: Tripartite Motif Synonyms: TRIM15, RING finger protein 93, Tripartite motif containing 15, Zinc finger protein 178, Zinc finger protein B7, Tripartite motif-containing 15, ZNFB7, RNF93, ZNF178
NCBI Accession:	NP_150232

Application Details

Application Notes:	Approved: IHC, IHC-P, WB (1.25 µg/mL)
Comment:	Target Species of Antibody: Human
Restrictions:	For Research Use only

Handling

Format:	Lyophilized
Reconstitution:	After adding water, will consist of PBS buffer with 2 % sucrose
Concentration:	Lot specific
Buffer:	Lyophilized from PBS with 2 % sucrose
Handling Advice:	Avoid repeat freeze-thaw cycles.
Storage:	4 °C,-20 °C
Storage Comment:	Long term: -20°C, the use of 50% glycerol is recommended if storing aliquots in -20°C for long term use (up to 1 year) Short term (less than 1 week): 4°C. Avoid freeze-thaw cycles.

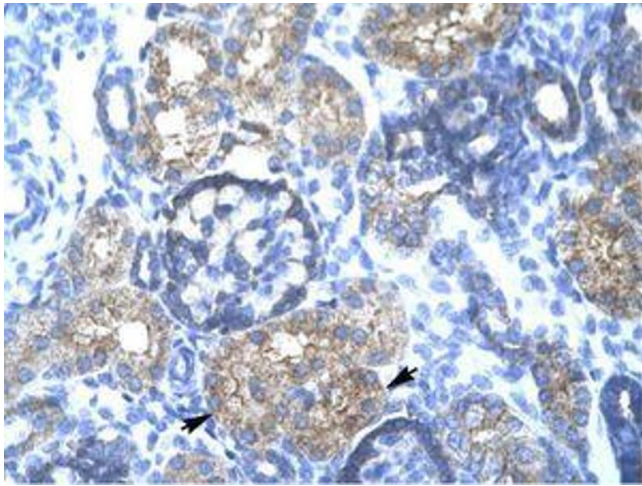


Image 1.

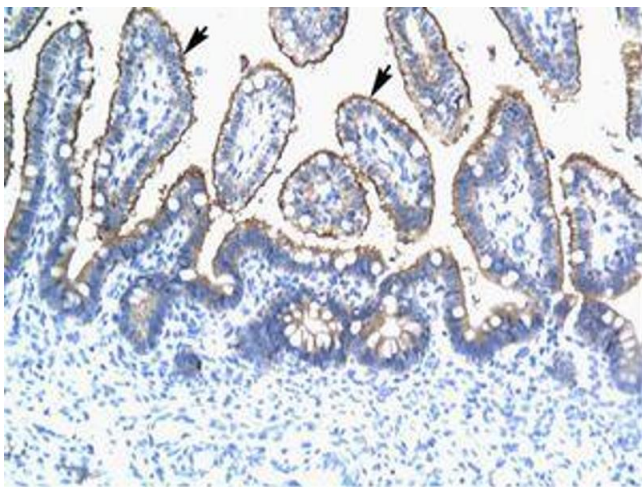


Image 2.



Image 3.