

Datasheet for ABIN202606
anti-FOXG1 antibody (AA 139-169)



[Go to Product page](#)

3 Images

Overview

Quantity:	100 µL
Target:	FOXG1
Binding Specificity:	AA 139-169
Reactivity:	Human, Mouse, Rat
Host:	Rabbit
Clonality:	Polyclonal
Conjugate:	This FOXG1 antibody is un-conjugated
Application:	Western Blotting (WB), Immunohistochemistry (IHC), Immunohistochemistry (Paraffin-embedded Sections) (IHC (p))

Product Details

Immunogen:	Synthetic peptide located between aa139-169 of human FOXG1 (P55316). Percent identity by BLAST analysis: Human, Gibbon, Marmoset, Mouse, Rat (86%). Type of Immunogen: Synthetic peptide
Specificity:	Human FOXG1
Predicted Reactivity:	Percent identity by BLAST analysis: Human (100%) Mouse, Rat (86%).
Purification:	Purified

Target Details

Target:	FOXG1
---------	-------

Target Details

Alternative Name: BF1 / FOXG1 ([FOXG1 Products](#))

Background: Name/Gene ID: FOXG1
Family: Transcription factor

Synonyms: FOXG1, BF1, BF2, Brain factor 1, BF-2, FKHL1, FKHL2, Forkhead box G1A, Forkhead box protein G1, Forkhead box protein G1A, Forkhead-related protein FKHL1, Forkhead-related protein FKHL2, FOXG1A, FOXG1B, FOXG1C, Forkhead box protein G1B, Forkhead-like 2, Forkhead-like 4, HBF2, HBF-1, HFK1, FKH2, FKHL3, FKHL4, Forkhead box G1, Forkhead box G1B, Forkhead box G1C, Forkhead-like 1, Forkhead-related protein FKHL3, HBF-3, HBF-G2, HFK3, Transcription factor bf-2, Oncogene QIN, QIN, BF-1, Brain factor 2, FHKL3, Forkhead box protein G1C, Forkhead-like 3, HBF-2, HFK2, KHL2

Gene ID: 2290

UniProt: [P55316](#)

Application Details

Application Notes: Approved: IHC, IHC-P, WB (5 - 8 µg/mL)

Comment: Target Species of Antibody: Human

Restrictions: For Research Use only

Handling

Format: Lyophilized

Reconstitution: dH2O

Concentration: Lot specific

Buffer: Lyophilized from PBS with 2 % sucrose

Handling Advice: Avoid repeat freeze-thaw cycles.

Storage: 4 °C, -20 °C

Storage Comment: Long term: -20°C, the use of 50% glycerol is recommended if storing aliquots in -20°C for long term use (up to 1 year)
Short term (less than 1 week): 4°C. Avoid freeze-thaw cycles.

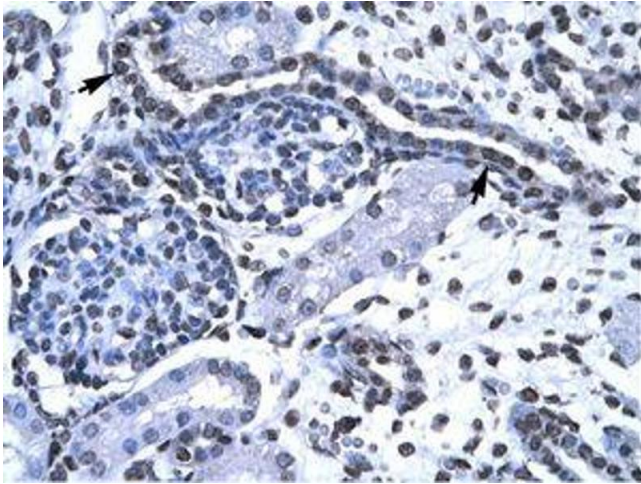


Image 1.

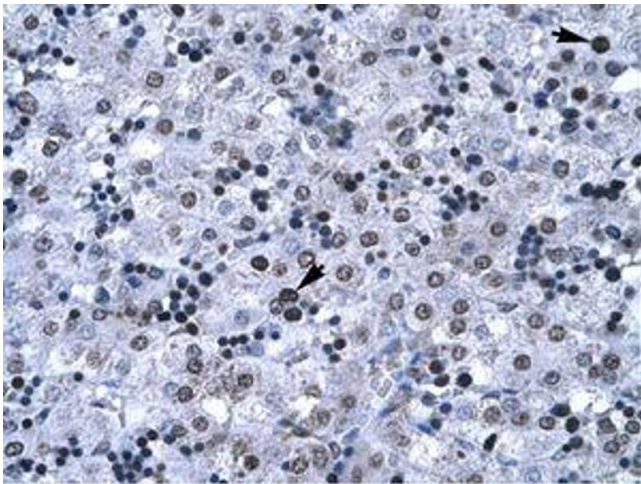


Image 2.



Image 3.