

Datasheet for ABIN202620  
**anti-TFEB antibody (C-Term)**[Go to Product page](#)

## 1 Image

## Overview

Quantity:	100 µL
Target:	TFEB
Binding Specificity:	C-Term
Reactivity:	Human, Mouse, Rat, Dog, Cow, Pig, Horse, Rabbit, Guinea Pig, Monkey, Bat, Hamster
Host:	Rabbit
Clonality:	Polyclonal
Conjugate:	This TFEB antibody is un-conjugated
Application:	Western Blotting (WB)

## Product Details

Immunogen:	Synthetic peptide from C-Terminus of human TFEB (P19484, NP_009093). Percent identity by BLAST analysis: Human, Chimpanzee, Gorilla, Gibbon, Baboon, Monkey, Galago, Marmoset, Mouse, Rat, Shrew, Hamster, Elephant, Panda, Dog, Bovine, Bat, Rabbit, Horse, Pig, Opossum, Guinea pig (100%), Goat, Turkey, Chicken, Platypus, Lizard (92%), Salmon (91%), Zebrafish (90%), Orangutan, Xenopus (84%).  Type of Immunogen: Synthetic peptide
Isotype:	IgG
Specificity:	Human TFEB
Predicted Reactivity:	Percent identity by BLAST analysis: Human, Mouse, Rat, Dog, Bovine, Rabbit, Horse, Pig, Guinea pig (100%) Goat, Chicken (92%).

## Product Details

Purification: Protein A purified

## Target Details

Target: TFEB

Alternative Name: TFEB ([TFEB Products](#))

Background: Name/Gene ID: TFEB  
Family: Transcription factor

Synonyms: TFEB, ALPHATFEB, BHLHE35, T-cell transcription factor EB, TCFEB, Transcription factor EB

Gene ID: 7942

NCBI Accession: [NP\\_009093](#)

UniProt: [P19484](#)

## Application Details

Application Notes: Approved: WB (2.5 µg/mL)

Comment: Target Species of Antibody: Human

Restrictions: For Research Use only

## Handling

Format: Lyophilized

Reconstitution: After adding water, will consist of PBS buffer with 2 % sucrose

Concentration: Lot specific

Buffer: Lyophilized from PBS with 2 % sucrose

Handling Advice: Avoid repeat freeze-thaw cycles.

Storage: 4 °C, -20 °C

Storage Comment: Long term: -20°C, the use of 50% glycerol is recommended if storing aliquots in -20°C for long term use (up to 1 year)  
Short term (less than 1 week): 4°C. Avoid freeze-thaw cycles.

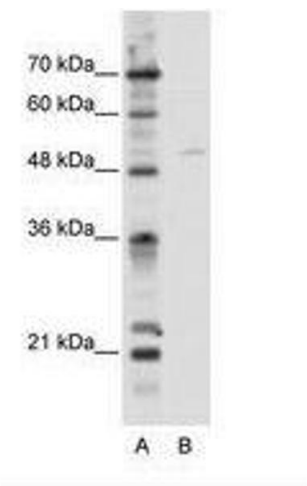


Image 1.