



[Go to Product page](#)

Datasheet for ABIN202633

## anti-ZNF358 antibody (AA 104-153)

### 2 Images

#### Overview

Quantity:	100 µL
Target:	ZNF358
Binding Specificity:	AA 104-153
Reactivity:	Human
Host:	Rabbit
Clonality:	Polyclonal
Conjugate:	This ZNF358 antibody is un-conjugated
Application:	Western Blotting (WB), Immunohistochemistry (IHC), Immunohistochemistry (Paraffin-embedded Sections) (IHC (p))

#### Product Details

Immunogen:	Synthetic peptide located between aa104-153 of human ZNF358 (Q9NW07, NP_060553). Percent identity by BLAST analysis: Human (100%), Gorilla, Marmoset (92%), Monkey (91%).  Type of Immunogen: Synthetic peptide
Isotype:	IgG
Specificity:	Human ZNF358
Predicted Reactivity:	Percent identity by BLAST analysis: Human (100%).
Purification:	Protein A purified

## Target Details

---

Target:	ZNF358
Alternative Name:	ZNF358 / ZFEND1 ( <a href="#">ZNF358 Products</a> )
Background:	Name/Gene ID: ZNF358 Family: Zinc Finger  Synonyms: ZNF358, ZFEND, Zinc finger protein 358
Gene ID:	140467
NCBI Accession:	<a href="#">NP_060553</a>
UniProt:	<a href="#">Q9NW07</a>
Pathways:	<a href="#">Stem Cell Maintenance</a>

## Application Details

---

Application Notes:	Approved: IHC, IHC-P, WB (1.25 µg/mL)
Comment:	Target Species of Antibody: Human
Restrictions:	For Research Use only

## Handling

---

Format:	Lyophilized
Reconstitution:	After adding water, will consist of PBS buffer with 2 % sucrose
Concentration:	Lot specific
Buffer:	Lyophilized from PBS with 2 % sucrose
Handling Advice:	Avoid repeat freeze-thaw cycles.
Storage:	4 °C,-20 °C
Storage Comment:	Long term: -20°C, the use of 50% glycerol is recommended if storing aliquots in -20°C for long term use (up to 1 year) Short term (less than 1 week): 4°C. Avoid freeze-thaw cycles.

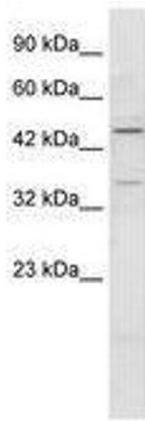


Image 1.

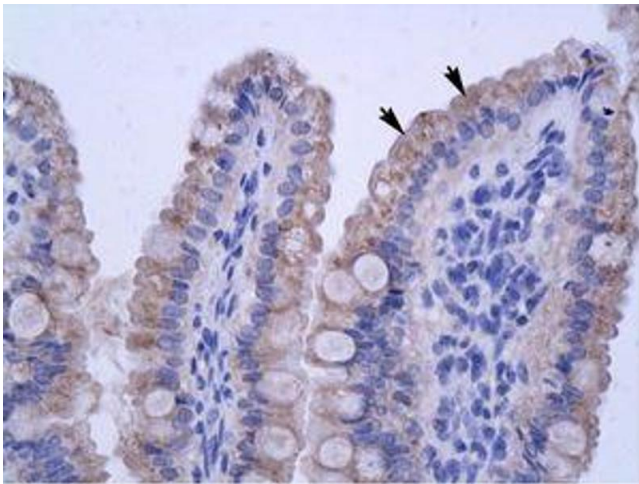


Image 2.