



[Go to Product page](#)

Datasheet for ABIN202643  
**anti-WDR13 antibody (AA 63-112)**

1 Image

Overview

|                      |  |
|----------------------|--|
| Quantity:            | 100 µL   |
| Target:              | WDR13  |
| Binding Specificity: | AA 63-112  |
| Reactivity:          | Human, Mouse, Rat, Dog, Cow, Guinea Pig, Horse, Rabbit, Hamster, Monkey, Pig |
| Host:                | Rabbit   |
| Clonality:           | Polyclonal   |
| Conjugate:           | This WDR13 antibody is un-conjugated   |
| Application:         | Western Blotting (WB)  |

Product Details

|                       |   |
|-----------------------|---|
| Immunogen:            | Synthetic peptide located between aa63-112 of human WDR13 (Q9H1Z4, NP_060353). Percent identity by BLAST analysis: Human, Chimpanzee, Gorilla, Orangutan, Gibbon, Monkey, Galago, Marmoset, Mouse, Rat, Hamster, Elephant, Dog, Bovine, Rabbit, Horse, Pig, Opossum, Guinea pig (100%).<br><br>Type of Immunogen: Synthetic peptide |
| Isotype:              | IgG   |
| Specificity:          | Human WDR13   |
| Predicted Reactivity: | Percent identity by BLAST analysis: Human, Mouse, Rat, Dog, Bovine, Rabbit, Horse (100%).   |
| Purification:         | Protein A purified  |

## Target Details

---

|                   |   |
|-------------------|---|
| Target:           | WDR13   |
| Alternative Name: | WDR13 ( <a href="#">WDR13 Products</a> )                              |
| Background:       | Name/Gene ID: WDR13<br><br>Synonyms: WDR13, WD repeat domain 13, MG21 |
| Gene ID:          | 64743   |
| NCBI Accession:   | <a href="#">NP_060353</a>   |
| UniProt:          | <a href="#">Q9H1Z4</a>  |

## Application Details

---

|                    |                                   |
|--------------------|-----------------------------------|
| Application Notes: | Approved: WB (1.25 µg/mL)         |
| Comment:           | Target Species of Antibody: Human |
| Restrictions:      | For Research Use only             |

## Handling

---

|                  |   |
|------------------|---|
| Format:          | Lyophilized   |
| Reconstitution:  | After adding water, will consist of PBS buffer with 2 % sucrose   |
| Concentration:   | Lot specific  |
| Buffer:          | Lyophilized from PBS with 2 % sucrose   |
| Handling Advice: | Avoid repeat freeze-thaw cycles.  |
| Storage:         | 4 °C, -20 °C  |
| Storage Comment: | Long term: -20°C, the use of 50% glycerol is recommended if storing aliquots in -20°C for long term use (up to 1 year)<br><br>Short term (less than 1 week): 4°C. Avoid freeze-thaw cycles. |

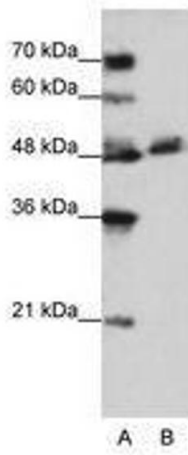


Image 1.