



[Go to Product page](#)

Datasheet for ABIN202654

anti-NOVA2 antibody (N-Term)

1 Image

Overview

Quantity:	100 µL
Target:	NOVA2
Binding Specificity:	N-Term
Reactivity:	Human, Mouse, Zebrafish (Danio rerio), Pig, Rabbit
Host:	Rabbit
Clonality:	Polyclonal
Conjugate:	This NOVA2 antibody is un-conjugated
Application:	Western Blotting (WB)

Product Details

Immunogen:	Synthetic peptide from N-Terminus of human NOVA2 (Q9UNW9, NP_002507). Percent identity by BLAST analysis: Human, Galago, Mouse, Rabbit, Pig, Zebrafish (100%), Rat (76%). Type of Immunogen: Synthetic peptide
Isotype:	IgG
Specificity:	Human NOVA2
Predicted Reactivity:	Percent identity by BLAST analysis: Human, Mouse, Rabbit, Pig (100%).
Purification:	Protein A purified

Target Details

Target:	NOVA2
---------	-------

Target Details

Alternative Name: [NOVA2 \(NOVA2 Products\)](#)

Background: Name/Gene ID: NOVA2

Synonyms: NOVA2, ANOVA, RNA-binding protein Nova-2, NOVA3

Gene ID: 4858

NCBI Accession: [NP_002507](#)

UniProt: [Q9UNW9](#)

Application Details

Application Notes: Approved: WB (1.25 µg/mL)

Comment: Target Species of Antibody: Human

Restrictions: For Research Use only

Handling

Format: Lyophilized

Reconstitution: After adding water, will consist of PBS buffer with 2 % sucrose

Concentration: Lot specific

Buffer: Lyophilized from PBS with 2 % sucrose

Handling Advice: Avoid repeat freeze-thaw cycles.

Storage: 4 °C, -20 °C

Storage Comment: Long term: -20°C, the use of 50% glycerol is recommended if storing aliquots in -20°C for long term use (up to 1 year)
Short term (less than 1 week): 4°C. Avoid freeze-thaw cycles.

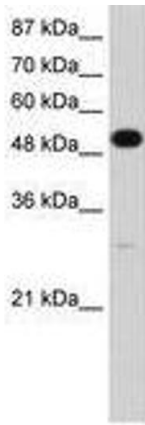


Image 1.