

Datasheet for ABIN202657  
**anti-RCOR3 antibody (N-Term)**



[Go to Product page](#)

2 Images

Overview

Quantity:	100 µL
Target:	RCOR3
Binding Specificity:	N-Term
Reactivity:	Human, Mouse, Dog, Horse, Cow, Rat, Zebrafish (Danio rerio), Monkey, Xenopus laevis
Host:	Rabbit
Clonality:	Polyclonal
Conjugate:	This RCOR3 antibody is un-conjugated
Application:	Immunohistochemistry (IHC), Western Blotting (WB), Immunohistochemistry (Paraffin-embedded Sections) (IHC (p))

Product Details

Immunogen:	Synthetic peptide from N-Terminus of human RCOR3 (Q9P2K3, NP_060724). Percent identity by BLAST analysis: Human, Chimpanzee, Gorilla, Gibbon, Galago, Marmoset, Mouse, Rat, Elephant, Dog, Bovine, Horse, Opossum, Platypus, Xenopus (100%), Lizard (92%), Bat, Rabbit (90%), Chicken, Stickleback (85%).  Type of Immunogen: Synthetic peptide
Isotype:	IgG
Specificity:	Human RCOR3
Predicted Reactivity:	Percent identity by BLAST analysis: Human, Mouse, Rat, Dog, Bovine, Horse (100%) Rabbit (90%) Chicken (85%).

## Product Details

---

Purification: Protein A purified

## Target Details

---

Target: RCOR3

Alternative Name: RCOR3 ([RCOR3 Products](#))

Background: Name/Gene ID: RCOR3

Synonyms: RCOR3, KIAA1343, REST corepressor 3, RP11-318L16.1

Gene ID: 55758

NCBI Accession: [NP\\_060724](#)

UniProt: [Q9P2K3](#)

Pathways: [Chromatin Binding](#)

## Application Details

---

Application Notes: Approved: IHC, IHC-P, WB (1.25 µg/mL)

Comment: Target Species of Antibody: Human

Restrictions: For Research Use only

## Handling

---

Format: Lyophilized

Reconstitution: After adding water, will consist of PBS buffer with 2 % sucrose

Concentration: Lot specific

Buffer: Lyophilized from PBS with 2 % sucrose

Handling Advice: Avoid repeat freeze-thaw cycles.

Storage: 4 °C, -20 °C

Storage Comment: Long term: -20°C, the use of 50% glycerol is recommended if storing aliquots in -20°C for long term use (up to 1 year)

Short term (less than 1 week): 4°C. Avoid freeze-thaw cycles.

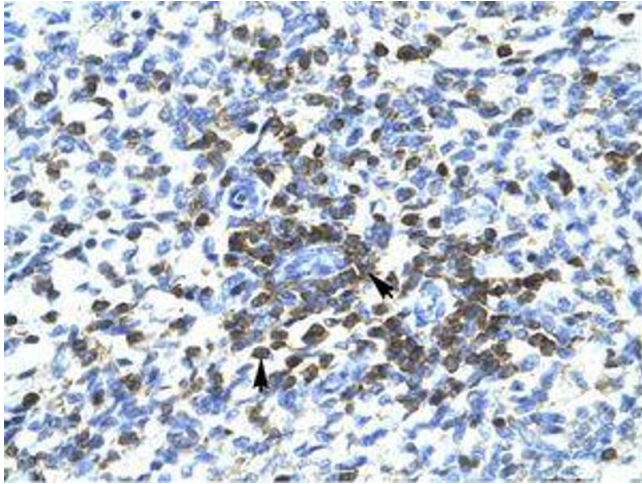


Image 1.



Image 2.