



[Go to Product page](#)

Datasheet for ABIN202668

anti-FOXC2 antibody (AA 412-461)

1 Image

Overview

Quantity:	100 µL
Target:	FOXC2
Binding Specificity:	AA 412-461
Reactivity:	Human, Dog, Horse, Guinea Pig, Monkey, Bat
Host:	Rabbit
Clonality:	Polyclonal
Conjugate:	This FOXC2 antibody is un-conjugated
Application:	Western Blotting (WB)

Product Details

Immunogen:	Synthetic peptide located between aa412-461 of human FOXC2 (Q99958, NP_005242). Percent identity by BLAST analysis: Human, Chimpanzee, Gorilla, Monkey, Panda, Dog, Bat, Horse, Opossum (100%), Mouse, Bovine (92%), Galago, Elephant, Guinea pig, Zebra finch, Chicken (84%). Type of Immunogen: Synthetic peptide
Isotype:	IgG
Specificity:	Human FOXC2
Predicted Reactivity:	Percent identity by BLAST analysis: Human, Dog, Horse (100%) Mouse, Bovine (92%) Guinea pig, Chicken (84%).
Purification:	Protein A purified

Target Details

Target:	FOXC2
Alternative Name:	FOXC2 (FOXC2 Products)
Background:	Name/Gene ID: FOXC2 Family: Transcription factor Synonyms: FOXC2, Forkhead box c2, Forkhead box protein C2, Mesenchyme fork head protein 1, MFH-1, Mesenchyme forkhead 1, MFH-1,mesenchyme forkhead 1, Transcription factor FKHL14, FKHL14, LD, MFH-1 protein, MFH1
Gene ID:	2303
NCBI Accession:	NP_005242
UniProt:	Q99958

Application Details

Application Notes:	Approved: WB (1.25 µg/mL)
Comment:	Target Species of Antibody: Human
Restrictions:	For Research Use only

Handling

Format:	Lyophilized
Reconstitution:	After adding water, will consist of PBS buffer with 2 % sucrose
Concentration:	Lot specific
Buffer:	Lyophilized from PBS with 2 % sucrose
Handling Advice:	Avoid repeat freeze-thaw cycles.
Storage:	4 °C,-20 °C
Storage Comment:	Long term: -20°C, the use of 50% glycerol is recommended if storing aliquots in -20°C for long term use (up to 1 year) Short term (less than 1 week): 4°C. Avoid freeze-thaw cycles.

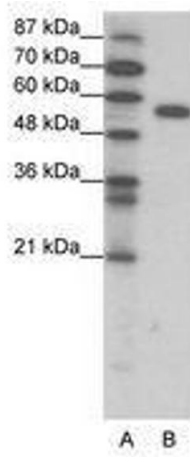


Image 1.