

Datasheet for ABIN202686  
**anti-SRF antibody (AA 120-169)**



[Go to Product page](#)

1 Image

## Overview

Quantity:	100 µL
Target:	SRF
Binding Specificity:	AA 120-169
Reactivity:	Human, Mouse, Rat, Dog, Pig, Cow, Rabbit, Monkey, Zebrafish (Danio rerio), Horse, Chicken, Xenopus laevis
Host:	Rabbit
Clonality:	Polyclonal
Conjugate:	This SRF antibody is un-conjugated
Application:	Western Blotting (WB)

## Product Details

Immunogen:	Synthetic peptide located between aa120-169 of human SRF (P11831, NP_003122). Percent identity by BLAST analysis: Human, Chimpanzee, Gibbon, Monkey, Galago, Marmoset, Mouse, Rat, Panda, Dog, Bovine, Rabbit, Horse, Pig, Opossum, Chicken, Lizard, Xenopus, Zebrafish, Sea squirt (100%).  Type of Immunogen: Synthetic peptide
Isotype:	IgG
Specificity:	Human SRF
Predicted Reactivity:	Percent identity by BLAST analysis: Human, Mouse, Rat, Dog, Bovine, Rabbit, Pig, Chicken, Xenopus, Zebrafish (100%).

## Product Details

---

Purification: Protein A purified

## Target Details

---

Target: SRF

Alternative Name: SRF / Serum Response Factor ([SRF Products](#))

Background: Name/Gene ID: SRF  
Family: Transcription factor

Synonyms: SRF, Serum response factor, MCM1

Gene ID: 6722

NCBI Accession: [NP\\_003122](#)

UniProt: [P11831](#)

## Application Details

---

Application Notes: Approved: WB (1.25 µg/mL)

Comment: Target Species of Antibody: Human

Restrictions: For Research Use only

## Handling

---

Format: Lyophilized

Reconstitution: After adding water, will consist of PBS buffer with 2 % sucrose

Concentration: Lot specific

Buffer: Lyophilized.

Handling Advice: Avoid repeat freeze-thaw cycles.

Storage: 4 °C,-20 °C

Storage Comment: Long term: -20°C, the use of 50% glycerol is recommended if storing aliquots in -20°C for long term use (up to 1 year)

Short term (less than 1 week): 4°C. Avoid freeze-thaw cycles.

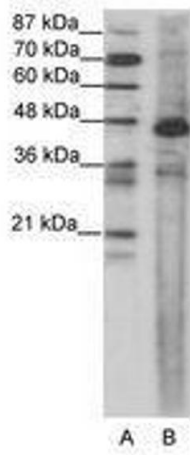


Image 1.