



[Go to Product page](#)

Datasheet for ABIN202698

anti-DCP1A antibody (N-Term)

1 Image

Overview

Quantity:	100 µL
Target:	DCP1A
Binding Specificity:	N-Term
Reactivity:	Human, Rat, Cow, Guinea Pig, Horse, Rabbit, Monkey, Zebrafish (Danio rerio), Hamster, Bat
Host:	Rabbit
Clonality:	Polyclonal
Conjugate:	This DCP1A antibody is un-conjugated
Application:	Western Blotting (WB)

Product Details

Immunogen:	Synthetic peptide from N-Terminus of human DCP1A (Q9NPI6, NP_060873). Percent identity by BLAST analysis: Human, Chimpanzee, Gorilla, Gibbon, Marmoset, Rat, Hamster, Elephant, Panda, Bovine, Bat, Rabbit, Horse, Guinea pig, Lizard (100%), Mouse, Chicken (92%), Xenopus, Zebrafish (85%). Type of Immunogen: Synthetic peptide
Isotype:	IgG
Specificity:	Human DCP1A
Predicted Reactivity:	Percent identity by BLAST analysis: Human, Bovine, Rabbit, Horse (100%) Mouse, Rat, Chicken (92%) Zebrafish (85%).
Purification:	Protein A purified

Target Details

Target:	DCP1A
Alternative Name:	SMIF / DCP1A (DCP1A Products)
Background:	Name/Gene ID: DCP1A Synonyms: DCP1A, Decapping enzyme hDcp1a, Nbla00360, HSA275986, Transcription factor SMIF, MRNA-decapping enzyme 1A, SMIF, SMAD4IP1
Gene ID:	55802
NCBI Accession:	NP_060873

Application Details

Application Notes:	Approved: WB (1.25 µg/mL)
Comment:	Target Species of Antibody: Human
Restrictions:	For Research Use only

Handling

Format:	Lyophilized
Reconstitution:	After adding water, will consist of PBS buffer with 2 % sucrose
Concentration:	Lot specific
Buffer:	Lyophilized from PBS with 2 % sucrose
Handling Advice:	Avoid repeat freeze-thaw cycles.
Storage:	4 °C, -20 °C
Storage Comment:	Long term: -20°C, the use of 50% glycerol is recommended if storing aliquots in -20°C for long term use (up to 1 year) Short term (less than 1 week): 4°C. Avoid freeze-thaw cycles.

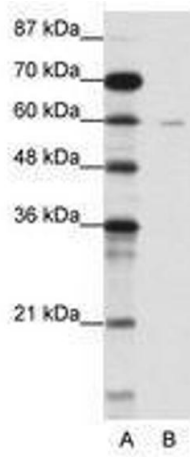


Image 1.