



[Go to Product page](#)

Datasheet for ABIN202699  
**anti-DCP1A antibody (AA 199-248)**

1 Image

Overview

Quantity:	100 µL
Target:	DCP1A
Binding Specificity:	AA 199-248
Reactivity:	Human, Mouse, Rat, Cow, Guinea Pig, Rabbit, Hamster, Bat
Host:	Rabbit
Clonality:	Polyclonal
Conjugate:	This DCP1A antibody is un-conjugated
Application:	Western Blotting (WB)

Product Details

Immunogen:	Synthetic peptide located between aa199-248 of human DCP1A (Q9NPI6, NP_060873). Percent identity by BLAST analysis: Human, Gorilla, Gibbon, Mouse, Rat, Hamster, Elephant, Panda, Bovine, Bat, Rabbit, Guinea pig (100%), Marmoset, Horse (92%).  Type of Immunogen: Synthetic peptide
Isotype:	IgG
Specificity:	Human DCP1A
Predicted Reactivity:	Percent identity by BLAST analysis: Human, Mouse, Rat, Bovine, Rabbit (100%) Horse (92%).
Purification:	Protein A purified

## Target Details

---

Target:	DCP1A
Alternative Name:	SMIF / DCP1A ( <a href="#">DCP1A Products</a> )
Background:	Name/Gene ID: DCP1A  Synonyms: DCP1A, Decapping enzyme hDcp1a, Nbla00360, HSA275986, Transcription factor SMIF, MRNA-decapping enzyme 1A, SMIF, SMAD4IP1
Gene ID:	55802
NCBI Accession:	<a href="#">NP_060873</a>

## Application Details

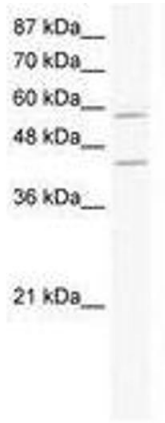
---

Application Notes:	Approved: WB (2.5 µg/mL)
Comment:	Target Species of Antibody: Human
Restrictions:	For Research Use only

## Handling

---

Format:	Lyophilized
Reconstitution:	After adding water, will consist of PBS buffer with 2 % sucrose
Concentration:	Lot specific
Buffer:	Lyophilized from PBS with 2 % sucrose
Handling Advice:	Avoid repeat freeze-thaw cycles.
Storage:	4 °C, -20 °C
Storage Comment:	Long term: -20°C, the use of 50% glycerol is recommended if storing aliquots in -20°C for long term use (up to 1 year) Short term (less than 1 week): 4°C. Avoid freeze-thaw cycles.



**Image 1.**