



[Go to Product page](#)

Datasheet for ABIN202706

anti-CREB3L1 antibody (N-Term)

1 Image

Overview

Quantity:	100 µL
Target:	CREB3L1
Binding Specificity:	N-Term
Reactivity:	Human, Mouse, Rat, Cow, Pig, Rabbit, Guinea Pig, Monkey
Host:	Rabbit
Clonality:	Polyclonal
Conjugate:	This CREB3L1 antibody is un-conjugated
Application:	Western Blotting (WB)

Product Details

Immunogen:	Synthetic peptide from N-Terminus of human CREB3L1 (Q96BA8, NP_443086). Percent identity by BLAST analysis: Human, Gorilla, Gibbon, Galago, Marmoset, Mouse, Rat, Elephant, Panda, Bovine, Rabbit, Pig, Guinea pig (100%), Dog (91%), Opossum (85%). Type of Immunogen: Synthetic peptide
Isotype:	IgG
Specificity:	Human CREB3L1
Predicted Reactivity:	Percent identity by BLAST analysis: Mouse, Rat, Bovine, Rabbit, Pig (100%) Dog (91%).
Purification:	Protein A purified

Target Details

Target:	CREB3L1
Alternative Name:	OASIS / CREB3L1 (CREB3L1 Products)
Background:	Name/Gene ID: CREB3L1 Synonyms: CREB3L1, BBF-2 homolog, OASIS
Gene ID:	90993
NCBI Accession:	NP_443086
UniProt:	Q96BA8
Pathways:	Thyroid Hormone Synthesis , Chromatin Binding

Application Details

Application Notes:	Approved: WB (1.25 µg/mL)
Comment:	Target Species of Antibody: Human
Restrictions:	For Research Use only

Handling

Format:	Lyophilized
Reconstitution:	After adding water, will consist of PBS buffer with 2 % sucrose
Concentration:	Lot specific
Buffer:	Lyophilized from PBS with 2 % sucrose
Handling Advice:	Avoid repeat freeze-thaw cycles.
Storage:	4 °C, -20 °C
Storage Comment:	Long term: -20°C, the use of 50% glycerol is recommended if storing aliquots in -20°C for long term use (up to 1 year) Short term (less than 1 week): 4°C. Avoid freeze-thaw cycles.

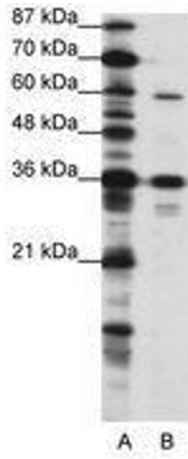


Image 1.