

Datasheet for ABIN202711
anti-ZNF286A antibody (C-Term)



[Go to Product page](#)

1 Image

Overview

Quantity:	100 µL
Target:	ZNF286A
Binding Specificity:	C-Term
Reactivity:	Human, Monkey
Host:	Rabbit
Clonality:	Polyclonal
Conjugate:	This ZNF286A antibody is un-conjugated
Application:	Western Blotting (WB)

Product Details

Immunogen:	Synthetic peptide from C-Terminus of human ZNF286A (Q9HBT8, NP_065703). Percent identity by BLAST analysis: Human, Chimpanzee, Gorilla, Gibbon, Monkey, Marmoset (100%), Mouse, Rat, Elephant, Bovine, Rabbit, Horse, Guinea pig (92%), Bat (85%), Orangutan, Galago, Panda, Pig, Opossum, Platypus, Xenopus (84%). Type of Immunogen: Synthetic peptide
Isotype:	IgG
Specificity:	Human ZNF286A
Predicted Reactivity:	Percent identity by BLAST analysis: Human (100%) Rabbit, Horse (92%) Bovine (85%).
Purification:	Protein A purified

Target Details

Target:	ZNF286A
Alternative Name:	ZNF286A (ZNF286A Products)
Background:	Name/Gene ID: ZNF286A Family: Zinc Finger Synonyms: ZNF286A, KIAA1874, Zinc finger protein 286A, Zinc finger protein 286, Zinc finger protein ZNF286, ZNF286
Gene ID:	57335
NCBI Accession:	NP_065703
UniProt:	Q9HBT8

Application Details

Application Notes:	Approved: WB (1.25 µg/mL)
Comment:	Target Species of Antibody: Human
Restrictions:	For Research Use only

Handling

Format:	Lyophilized
Reconstitution:	After adding water, will consist of PBS buffer with 2 % sucrose
Concentration:	Lot specific
Buffer:	Lyophilized from PBS with 2 % sucrose
Handling Advice:	Avoid repeat freeze-thaw cycles.
Storage:	4 °C,-20 °C
Storage Comment:	Long term: -20°C, the use of 50% glycerol is recommended if storing aliquots in -20°C for long term use (up to 1 year) Short term (less than 1 week): 4°C. Avoid freeze-thaw cycles.

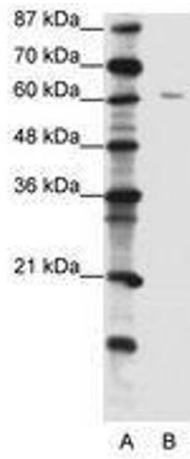


Image 1.