

Datasheet for ABIN202760
anti-RELB antibody (AA 358-407)



[Go to Product page](#)

1 Image

Overview

Quantity:	100 µL
Target:	RELB
Binding Specificity:	AA 358-407
Reactivity:	Mouse, Rat, Cow
Host:	Rabbit
Clonality:	Polyclonal
Conjugate:	This RELB antibody is un-conjugated
Application:	Western Blotting (WB)

Product Details

Immunogen:	Synthetic peptide located between aa358-407 of mouse RELB (Q04863, NP_033072). Percent identity by BLAST analysis: Mouse, Rat, Bovine (100%), Human, Gorilla, Gibbon, Monkey, Galago, Marmoset, Elephant, Panda, Dog, Bat, Rabbit, Horse, Opossum, Guinea pig (92%). Type of Immunogen: Synthetic peptide
Isotype:	IgG
Specificity:	Human RELB
Predicted Reactivity:	Percent identity by BLAST analysis: Mouse, Bovine (100%) Human, Dog, Rabbit, Horse, Guinea pig (92%).
Purification:	Protein A purified

Target Details

Target:	RELB
Alternative Name:	RELB (RELB Products)
Background:	Name/Gene ID: RELB Synonyms: RELB, REL-B, Transcription factor RelB, I-Rel, IREL
Gene ID:	5971
NCBI Accession:	NP_033072
UniProt:	Q01201
Pathways:	NF-kappaB Signaling , RTK Signaling

Application Details

Application Notes:	Approved: WB (2.5 µg/mL)
Comment:	Target Species of Antibody: Mouse
Restrictions:	For Research Use only

Handling

Format:	Lyophilized
Reconstitution:	After adding water, will consist of PBS buffer with 2 % sucrose
Concentration:	Lot specific
Buffer:	Lyophilized from PBS with 2 % sucrose
Handling Advice:	Avoid repeat freeze-thaw cycles.
Storage:	4 °C, -20 °C
Storage Comment:	Long term: -20°C, the use of 50% glycerol is recommended if storing aliquots in -20°C for long term use (up to 1 year) Short term (less than 1 week): 4°C. Avoid freeze-thaw cycles.

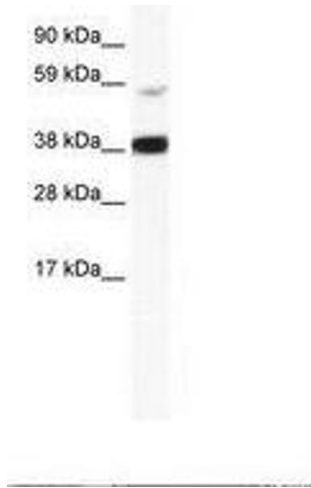


Image 1.