



[Go to Product page](#)

Datasheet for ABIN202768

anti-Arx antibody (AA 220-269)

1 Image

Overview

Quantity:	100 µL
Target:	Arx (ARX)
Binding Specificity:	AA 220-269
Reactivity:	Mouse, Horse
Host:	Rabbit
Clonality:	Polyclonal
Conjugate:	This Arx antibody is un-conjugated
Application:	Western Blotting (WB)

Product Details

Immunogen:	Synthetic peptide located between aa220-269 of mouse ARX (O35085, NP_031518). Percent identity by BLAST analysis: Mouse (100%), Human, Gorilla, Rat, Dog, Rabbit, Guinea pig (92%), Monkey (85%). Type of Immunogen: Synthetic peptide
Isotype:	IgG
Specificity:	Human ARX
Predicted Reactivity:	Percent identity by BLAST analysis: Mouse (100%) Human, Rat, Dog, Rabbit, Guinea pig (92%).
Purification:	Protein A purified

Target Details

Target:	Arx (ARX)
Alternative Name:	ARX (ARX Products)
Background:	Name/Gene ID: ARX Synonyms: ARX, Aristaless-related homeobox, Aristaless related homeobox, Cancer/testis antigen 121, EIEE1, MRX29, MRX33, MRX38, MRX54, MRX32, MRX76, MRXS1, ISSX, MRX43, PRTS, CT121, Homeobox protein ARX, MRX36, MRX87
Gene ID:	170302
NCBI Accession:	NP_031518
UniProt:	Q96QS3

Application Details

Application Notes:	Approved: WB (2.5 µg/mL)
Comment:	Target Species of Antibody: Mouse
Restrictions:	For Research Use only

Handling

Format:	Lyophilized
Reconstitution:	After adding water, will consist of PBS buffer with 2 % sucrose
Concentration:	Lot specific
Buffer:	Lyophilized from PBS with 2 % sucrose
Handling Advice:	Avoid repeat freeze-thaw cycles.
Storage:	4 °C,-20 °C
Storage Comment:	Long term: -20°C, the use of 50% glycerol is recommended if storing aliquots in -20°C for long term use (up to 1 year) Short term (less than 1 week): 4°C. Avoid freeze-thaw cycles.

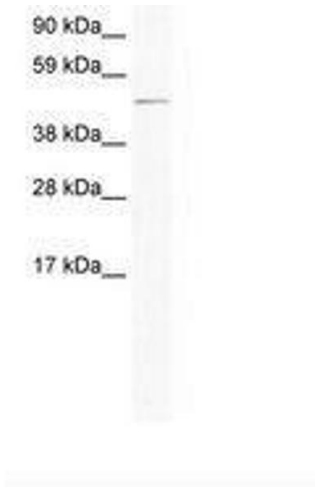


Image 1.