

Datasheet for ABIN202769

anti-INSM2 antibody (N-Term)



[Go to Product page](#)

1 Image

Overview

Quantity:	100 µL
Target:	INSM2
Binding Specificity:	N-Term
Reactivity:	Human
Host:	Rabbit
Clonality:	Polyclonal
Conjugate:	This INSM2 antibody is un-conjugated
Application:	Western Blotting (WB)

Product Details

Immunogen:	Synthetic peptide from N-Terminus of human INSM2 (Q96Q84, NP_115983). Percent identity by BLAST analysis: Human (100%), Monkey (85%). Type of Immunogen: Synthetic peptide
Isotype:	IgG
Specificity:	Human INSM2
Predicted Reactivity:	Percent identity by BLAST analysis: Human (100%).
Purification:	Protein A purified

Target Details

Target:	INSM2
---------	-------

Target Details

Alternative Name: IA-6 / INSM2 ([INSM2 Products](#))

Background: Name/Gene ID: INSM2

Synonyms: INSM2, IA6, IA-6, Insulinoma-associated 2, MLT1, Zinc finger protein IA-6

Gene ID: 84684

NCBI Accession: [NP_115983](#)

UniProt: [Q96T92](#)

Application Details

Application Notes: Approved: WB (2.5 µg/mL)

Comment: Target Species of Antibody: Human

Restrictions: For Research Use only

Handling

Format: Lyophilized

Reconstitution: After adding water, will consist of PBS buffer with 2 % sucrose

Concentration: Lot specific

Buffer: Lyophilized from PBS with 2 % sucrose

Handling Advice: Avoid repeat freeze-thaw cycles.

Storage: 4 °C, -20 °C

Storage Comment: Long term: -20°C, the use of 50% glycerol is recommended if storing aliquots in -20°C for long term use (up to 1 year)
Short term (less than 1 week): 4°C. Avoid freeze-thaw cycles.

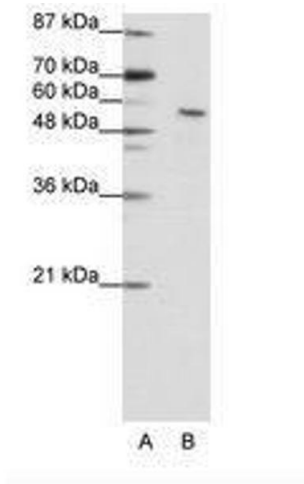


Image 1.