



[Go to Product page](#)

Datasheet for ABIN202775
anti-PRDM14 antibody (AA 208-257)

2 Images

Overview

Quantity:	100 µL
Target:	PRDM14
Binding Specificity:	AA 208-257
Reactivity:	Human, Pig, Cow, Rabbit, Horse
Host:	Rabbit
Clonality:	Polyclonal
Conjugate:	This PRDM14 antibody is un-conjugated
Application:	Western Blotting (WB), Immunohistochemistry (IHC), Immunohistochemistry (Paraffin-embedded Sections) (IHC (p))

Product Details

Immunogen:	Synthetic peptide located between aa208-257 of human PRDM14 (Q9GZV8, NP_078780). Percent identity by BLAST analysis: Human, Chimpanzee, Gorilla, Marmoset, Rabbit (100%), Gibbon, Monkey, Galago (92%), Elephant, Panda, Dog, Bovine, Horse, Pig (85%). Type of Immunogen: Synthetic peptide
Isotype:	IgG
Specificity:	Human PRDM14
Predicted Reactivity:	Percent identity by BLAST analysis: Rabbit (100%) Bovine, Horse, Pig (85%).
Purification:	Protein A purified

Target Details

Target:	PRDM14
Alternative Name:	PRDM14 (PRDM14 Products)
Background:	Name/Gene ID: PRDM14 Synonyms: PRDM14, PFM11, PR domain containing 14
Gene ID:	63978
NCBI Accession:	NP_078780
UniProt:	Q9GZV8

Application Details

Application Notes:	Approved: IHC, IHC-P, WB (1.25 µg/mL)
Comment:	Target Species of Antibody: Human
Restrictions:	For Research Use only

Handling

Format:	Lyophilized
Reconstitution:	After adding water, will consist of PBS buffer with 2 % sucrose
Concentration:	Lot specific
Buffer:	Lyophilized from PBS with 2 % sucrose
Handling Advice:	Avoid repeat freeze-thaw cycles.
Storage:	4 °C, -20 °C
Storage Comment:	Long term: -20°C, the use of 50% glycerol is recommended if storing aliquots in -20°C for long term use (up to 1 year) Short term (less than 1 week): 4°C. Avoid freeze-thaw cycles.

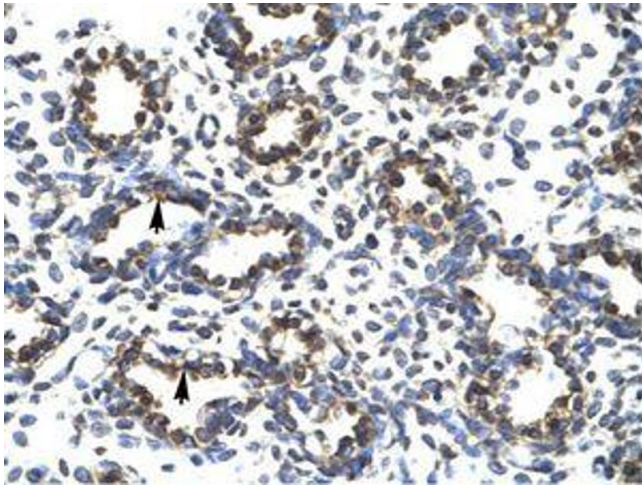


Image 1.

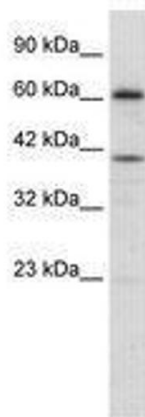


Image 2.