

Datasheet for ABIN202782  
**anti-METTL3 antibody (AA 206-255)**[Go to Product page](#)

## 1 Image

## Overview

Quantity:	100 µL
Target:	METTL3
Binding Specificity:	AA 206-255
Reactivity:	Human, Rat, Mouse, Dog, Horse, Guinea Pig, Rabbit, Cow, Zebrafish (Danio rerio), Goat, Pig, Bat, Hamster, Monkey, Xenopus laevis
Host:	Rabbit
Clonality:	Polyclonal
Conjugate:	This METTL3 antibody is un-conjugated
Application:	Western Blotting (WB)

## Product Details

Immunogen:	Synthetic peptide located between aa206-255 of human METTL3 (Q86U44, NP_062826). Percent identity by BLAST analysis: Human, Chimpanzee, Gorilla, Gibbon, Monkey, Galago, Marmoset, Mouse, Rat, Goat, Hamster, Elephant, Panda, Dog, Bovine, Bat, Rabbit, Horse, Pig, Opossum, Guinea pig, Xenopus, Stickleback, Zebrafish (100%).  Type of Immunogen: Synthetic peptide
Isotype:	IgG
Specificity:	Human METTL3
Predicted Reactivity:	Percent identity by BLAST analysis: Human, Mouse, Rat, Dog, Bovine, Goat, Rabbit, Horse, Pig, Guinea pig, Xenopus, Zebrafish (100%).

## Product Details

Purification: Protein A purified

## Target Details

Target: METTL3

Alternative Name: METTL3 / M6A ([METTL3 Products](#))

Background: Name/Gene ID: METTL3

Synonyms: METTL3, M6A, Methyltransferase like 3, MTA70, Spo8, IME4, MRNA m(6)A methyltransferase, MT-A70

Gene ID: 56339

NCBI Accession: [NP\\_062826](#)

UniProt: [Q86U44](#)

## Application Details

Application Notes: Approved: WB (5 µg/mL)

Comment: Target Species of Antibody: Human

Restrictions: For Research Use only

## Handling

Format: Lyophilized

Reconstitution: After adding water, will consist of PBS buffer with 2 % sucrose

Concentration: Lot specific

Buffer: Lyophilized from PBS with 2 % sucrose

Handling Advice: Avoid repeat freeze-thaw cycles.

Storage: 4 °C, -20 °C

Storage Comment: Long term: -20°C, the use of 50% glycerol is recommended if storing aliquots in -20°C for long term use (up to 1 year)

Short term (less than 1 week): 4°C. Avoid freeze-thaw cycles.

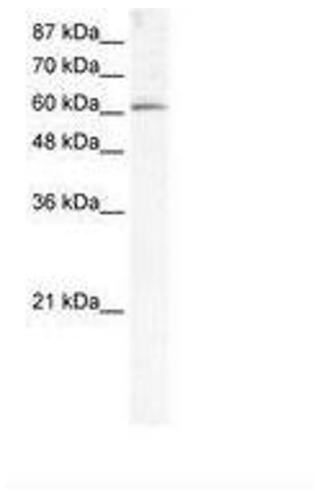


Image 1.