



[Go to Product page](#)

Datasheet for ABIN202791

## anti-KLHL3 antibody (N-Term)

### 1 Image

#### Overview

Quantity:	100 µL
Target:	KLHL3
Binding Specificity:	N-Term
Reactivity:	Human, Cow, Guinea Pig, Rabbit, Bat
Host:	Rabbit
Clonality:	Polyclonal
Conjugate:	This KLHL3 antibody is un-conjugated
Application:	Western Blotting (WB)

#### Product Details

Immunogen:	Synthetic peptide from N-Terminus of human KLHL3 (Q9UH77, NP_059111). Percent identity by BLAST analysis: Human, Chimpanzee, Gorilla, Orangutan, Bat, Rabbit (100%), Gibbon, Marmoset (92%), Dog (90%), Bovine (85%), Guinea pig (84%).  Type of Immunogen: Synthetic peptide
Isotype:	IgG
Specificity:	Human KLHL3
Predicted Reactivity:	Percent identity by BLAST analysis: Human, Rabbit (100%) Dog (90%) Bovine (85%) Guinea pig (84%).
Purification:	Protein A purified

## Target Details

---

Target:	KLHL3
Alternative Name:	KLHL3 ( <a href="#">KLHL3 Products</a> )
Background:	Name/Gene ID: KLHL3  Synonyms: KLHL3, Kelch-like 3 (Drosophila), KIAA1129, PHA2D, Kelch (Drosophila)-like 3, Kelch-like protein 3
Gene ID:	26249
NCBI Accession:	<a href="#">NP_059111</a>
UniProt:	<a href="#">Q9UH77</a>

## Application Details

---

Application Notes:	Approved: WB (1.25 µg/mL)
Comment:	Target Species of Antibody: Human
Restrictions:	For Research Use only

## Handling

---

Format:	Lyophilized
Reconstitution:	After adding water, will consist of PBS buffer with 2 % sucrose
Concentration:	Lot specific
Buffer:	Lyophilized from PBS with 2 % sucrose
Handling Advice:	Avoid repeat freeze-thaw cycles.
Storage:	4 °C, -20 °C
Storage Comment:	Long term: -20°C, the use of 50% glycerol is recommended if storing aliquots in -20°C for long term use (up to 1 year)  Short term (less than 1 week): 4°C. Avoid freeze-thaw cycles.

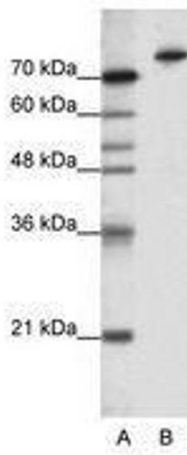


Image 1.