



Datasheet for ABIN202798  
**anti-PDLIM5 antibody (C-Term)**



[Go to Product page](#)

1 Image

Overview

Quantity:	100 µL
Target:	PDLIM5
Binding Specificity:	C-Term
Reactivity:	Human, Mouse, Rat, Dog, Cow, Horse, Rabbit, Guinea Pig, Zebrafish (Danio rerio), Pig, Bat, Monkey
Host:	Rabbit
Clonality:	Polyclonal
Conjugate:	This PDLIM5 antibody is un-conjugated
Application:	Western Blotting (WB)

Product Details

Immunogen:	Synthetic peptide from C-Terminus of human PDLIM5 (Q5UW38, NP_006448). Percent identity by BLAST analysis: Human, Chimpanzee, Gorilla, Gibbon, Monkey, Galago, Marmoset, Mouse, Rat, Elephant, Panda, Dog, Bovine, Bat, Rabbit, Horse, Pig, Guinea pig, Zebrafish (100%), Opossum, Zebra finch, Chicken, Platypus, Lizard, Xenopus (92%), Turkey, Stickleback (83%).  Type of Immunogen: Synthetic peptide
Isotype:	IgG
Specificity:	Human PDLIM5
Predicted Reactivity:	Percent identity by BLAST analysis: Human, Mouse, Rat, Dog, Rabbit, Horse, Pig, Zebrafish (100%) Chicken (92%).

## Product Details

---

Purification: Protein A purified

## Target Details

---

Target: PDLIM5

Alternative Name: PDLIM5 / LIM ([PDLIM5 Products](#))

Background: Name/Gene ID: PDLIM5

Synonyms: PDLIM5, ENH1, L9, PDZ and LIM domain protein 5, Lim, PDZ and LIM domain 5, ENH, Enigma homolog, Enigma-like LIM domain protein

Gene ID: 10611

NCBI Accession: [NP\\_006448](#)

UniProt: [Q96HC4](#)

## Application Details

---

Application Notes: Approved: WB (2.5 µg/mL)

Comment: Target Species of Antibody: Human

Restrictions: For Research Use only

## Handling

---

Format: Lyophilized

Reconstitution: After adding water, will consist of PBS buffer with 2 % sucrose

Concentration: Lot specific

Buffer: Lyophilized from PBS with 2 % sucrose

Handling Advice: Avoid repeat freeze-thaw cycles.

Storage: 4 °C, -20 °C

Storage Comment: Long term: -20°C, the use of 50% glycerol is recommended if storing aliquots in -20°C for long term use (up to 1 year)

Short term (less than 1 week): 4°C. Avoid freeze-thaw cycles.

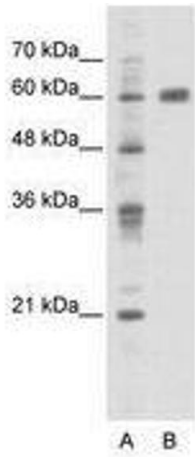


Image 1.