



Datasheet for ABIN202816 **anti-KLHL26 antibody (C-Term)**



[Go to Product page](#)

1 Image

Overview

Quantity:	100 µL
Target:	KLHL26
Binding Specificity:	C-Term
Reactivity:	Human, Rabbit
Host:	Rabbit
Clonality:	Polyclonal
Conjugate:	This KLHL26 antibody is un-conjugated
Application:	Western Blotting (WB)

Product Details

Immunogen:	Synthetic peptide from C-Terminus of human KLHL26 (Q53HC5, NP_060786). Percent identity by BLAST analysis: Human, Chimpanzee, Gorilla, Monkey, Rabbit (100%), Galago, Marmoset, Mouse, Rat, Elephant, Dog, Bovine, Bat, Horse, Pig, Opossum, Guinea pig, Turkey, Zebra finch, Chicken, Platypus, Zebrafish (92%), Stickleback (85%). Type of Immunogen: Synthetic peptide
Isotype:	IgG
Specificity:	Human KLHL26
Predicted Reactivity:	Percent identity by BLAST analysis: Rabbit (100%) Mouse, Rat, Dog, Bovine, Horse, Pig, Guinea pig, Chicken, Zebrafish (92%).
Purification:	Protein A purified

Target Details

Target:	KLHL26
Alternative Name:	KLHL26 (KLHL26 Products)
Background:	Name/Gene ID: KLHL26 Synonyms: KLHL26, Kelch-like 26 (Drosophila), Kelch-like protein 26
Gene ID:	55295
NCBI Accession:	NP_060786
UniProt:	Q53HC5

Application Details

Application Notes:	Approved: WB (1.25 µg/mL)
Comment:	Target Species of Antibody: Human
Restrictions:	For Research Use only

Handling

Format:	Lyophilized
Reconstitution:	After adding water, will consist of PBS buffer with 2 % sucrose
Concentration:	Lot specific
Buffer:	Lyophilized from PBS with 2 % sucrose
Handling Advice:	Avoid repeat freeze-thaw cycles.
Storage:	4 °C, -20 °C
Storage Comment:	Long term: -20°C, the use of 50% glycerol is recommended if storing aliquots in -20°C for long term use (up to 1 year) Short term (less than 1 week): 4°C. Avoid freeze-thaw cycles.

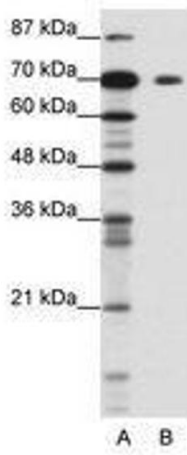


Image 1.