



Datasheet for ABIN202820
anti-DIS3L2 antibody (N-Term)



[Go to Product page](#)

2 Images

Overview

Quantity:	100 µL
Target:	DIS3L2
Binding Specificity:	N-Term
Reactivity:	Human, Mouse, Rat, Dog, Cow, Pig
Host:	Rabbit
Clonality:	Polyclonal
Conjugate:	This DIS3L2 antibody is un-conjugated
Application:	Western Blotting (WB), Immunohistochemistry (IHC), Immunohistochemistry (Paraffin-embedded Sections) (IHC (p))

Product Details

Immunogen:	Synthetic peptide from N-Terminus of human DIS3L2 (Q8IYB7, NP_689596). Percent identity by BLAST analysis: Human, Chimpanzee, Gorilla (100%), Orangutan, Monkey, Hamster (92%), Mouse, Rat, Dog, Bat, Horse, Pig, Guinea pig (85%). Type of Immunogen: Synthetic peptide
Isotype:	IgG
Specificity:	Human DIS3L2
Predicted Reactivity:	Percent identity by BLAST analysis: Human (100%) Orangutan, Monkey (92%) Mouse, Rat, Dog, Pig (85%).
Purification:	Protein A purified

Target Details

Target:	DIS3L2
Alternative Name:	DIS3L2 (DIS3L2 Products)
Background:	Name/Gene ID: DIS3L2 Synonyms: DIS3L2, DIS3-like exonuclease 2, PRLMNS, FAM6A
Gene ID:	129563
NCBI Accession:	NP_689596
UniProt:	Q8IYB7
Pathways:	Stem Cell Maintenance

Application Details

Application Notes:	Approved: IHC, IHC-P, WB (1.25 µg/mL)
Comment:	Target Species of Antibody: Human
Restrictions:	For Research Use only

Handling

Format:	Lyophilized
Reconstitution:	After adding water, will consist of PBS buffer with 2 % sucrose
Concentration:	Lot specific
Buffer:	Lyophilized from PBS with 2 % sucrose
Handling Advice:	Avoid repeat freeze-thaw cycles.
Storage:	4 °C, -20 °C
Storage Comment:	Long term: -20°C, the use of 50% glycerol is recommended if storing aliquots in -20°C for long term use (up to 1 year) Short term (less than 1 week): 4°C. Avoid freeze-thaw cycles.

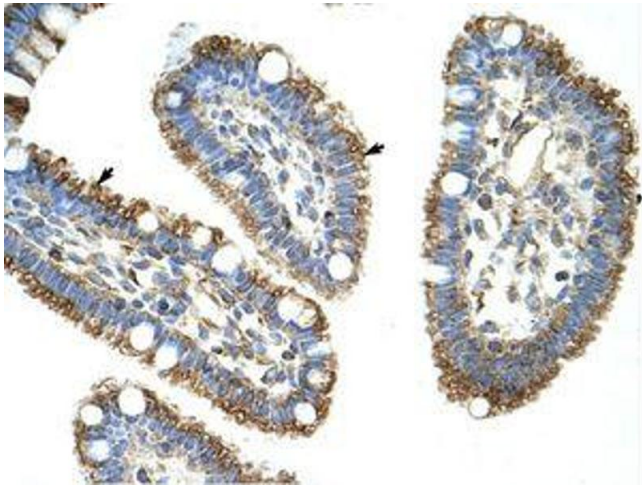


Image 1.

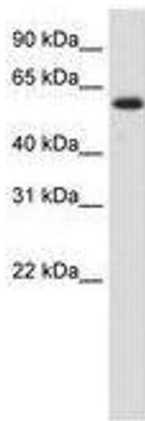


Image 2.