



[Go to Product page](#)

Datasheet for ABIN202839

anti-ASH2L antibody (AA 54-103)

1 Image

Overview

Quantity:	100 µL
Target:	ASH2L
Binding Specificity:	AA 54-103
Reactivity:	Human, Rat, Dog, Horse, Cow, Guinea Pig, Bat
Host:	Rabbit
Clonality:	Polyclonal
Conjugate:	This ASH2L antibody is un-conjugated
Application:	Western Blotting (WB)

Product Details

Immunogen:	Synthetic peptide located between aa54-103 of human ASH2L (Q9UBL3, NP_004665). Percent identity by BLAST analysis: Human, Chimpanzee, Gorilla, Orangutan, Gibbon, Galago, Rat, Elephant, Panda, Dog, Bovine, Bat, Horse, Guinea pig (100%), Marmoset, Mouse, Hamster, Opossum (92%), Platypus (85%). Type of Immunogen: Synthetic peptide
Isotype:	IgG
Specificity:	Human ASH2L
Predicted Reactivity:	Percent identity by BLAST analysis: Human, Rat, Dog, Bovine, Horse, Guinea pig (100%) Mouse (92%).
Purification:	Protein A purified

Target Details

Target: ASH2L

Alternative Name: ASH2L / ASH2 ([ASH2L Products](#))

Background: Name/Gene ID: ASH2L

Synonyms: ASH2L, ASH2, ASH2-like protein, ASH2L1, ASH2L2, Bre2

Gene ID: 9070

NCBI Accession: [NP_004665](#)

UniProt: [Q9UBL3](#)

Application Details

Application Notes: Approved: WB (2.5 µg/mL)

Comment: Target Species of Antibody: Human

Restrictions: For Research Use only

Handling

Format: Lyophilized

Reconstitution: After adding water, will consist of PBS buffer with 2 % sucrose

Concentration: Lot specific

Buffer: Lyophilized from PBS with 2 % sucrose

Handling Advice: Avoid repeat freeze-thaw cycles.

Storage: 4 °C, -20 °C

Storage Comment: Long term: -20°C, the use of 50% glycerol is recommended if storing aliquots in -20°C for long term use (up to 1 year)

Short term (less than 1 week): 4°C. Avoid freeze-thaw cycles.

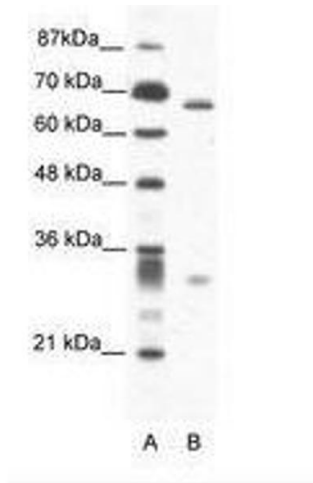


Image 1.