



Datasheet for ABIN202840  
**anti-KLHL14 antibody (N-Term)**



[Go to Product page](#)

1 Image

Overview

|                      |  |
|----------------------|--|
| Quantity:            | 100 µL   |
| Target:              | KLHL14   |
| Binding Specificity: | N-Term   |
| Reactivity:          | Human, Rat, Mouse, Cow, Rabbit, Pig, Guinea Pig, Zebrafish (Danio rerio), Chicken, Bat, Monkey, Xenopus laevis |
| Host:                | Rabbit   |
| Clonality:           | Polyclonal   |
| Conjugate:           | This KLHL14 antibody is un-conjugated  |
| Application:         | Western Blotting (WB)  |

Product Details

|                       |   |
|-----------------------|---|
| Immunogen:            | Synthetic peptide from N-Terminus of human KLHL14 (Q8WU41, NP_065856). Percent identity by BLAST analysis: Human, Chimpanzee, Gorilla, Gibbon, Monkey, Galago, Marmoset, Mouse, Rat, Elephant, Bovine, Bat, Rabbit, Pig, Opossum, Guinea pig, Zebra finch, Chicken, Xenopus (100%), Stickleback, Zebrafish (85%).<br><br>Type of Immunogen: Synthetic peptide |
| Isotype:              | IgG   |
| Specificity:          | Human KLHL14  |
| Predicted Reactivity: | Percent identity by BLAST analysis: Rat, Bovine, Rabbit, Pig, Guinea pig (100%) Zebrafish (85%).  |
| Purification:         | Protein A purified  |

## Target Details

---

|                   |   |
|-------------------|---|
| Target:           | KLHL14  |
| Alternative Name: | KLHL14 ( <a href="#">KLHL14 Products</a> )  |
| Background:       | Name/Gene ID: KLHL14<br><br>Synonyms: KLHL14, KIAA1384, Kelch-like 14 (Drosophila), Kelch-like protein 14, Printor, Protein interactor of torsinA |
| Gene ID:          | 57565   |
| NCBI Accession:   | <a href="#">NP_065856</a>   |
| UniProt:          | <a href="#">Q9P2G3</a>  |

## Application Details

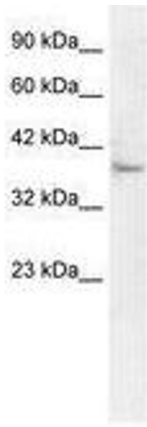
---

|                    |                                   |
|--------------------|-----------------------------------|
| Application Notes: | Approved: WB (5 µg/mL)            |
| Comment:           | Target Species of Antibody: Human |
| Restrictions:      | For Research Use only             |

## Handling

---

|                  |   |
|------------------|---|
| Format:          | Lyophilized   |
| Reconstitution:  | After adding water, will consist of PBS buffer with 2 % sucrose   |
| Concentration:   | Lot specific  |
| Buffer:          | Lyophilized from PBS with 2 % sucrose   |
| Handling Advice: | Avoid repeat freeze-thaw cycles.  |
| Storage:         | 4 °C, -20 °C  |
| Storage Comment: | Long term: -20°C, the use of 50% glycerol is recommended if storing aliquots in -20°C for long term use (up to 1 year)<br><br>Short term (less than 1 week): 4°C. Avoid freeze-thaw cycles. |



**Image 1.**