

Datasheet for ABIN202842

anti-RACGAP1 antibody (AA 20-69)[Go to Product page](#)**1** Image

Overview

Quantity:	100 µL
Target:	RACGAP1
Binding Specificity:	AA 20-69
Reactivity:	Human, Mouse, Rat, Cow, Dog, Horse, Guinea Pig, Rabbit, Bat
Host:	Rabbit
Clonality:	Polyclonal
Conjugate:	This RACGAP1 antibody is un-conjugated
Application:	Western Blotting (WB)

Product Details

Immunogen:	Synthetic peptide located between aa20-69 of human RACGAP1 (Q9H0H5, NP_037409). Percent identity by BLAST analysis: Human, Chimpanzee, Gorilla, Gibbon, Monkey, Dog, Bovine, Bat, Rabbit, Horse, Guinea pig (100%), Marmoset, Elephant (92%), Mouse, Rat, Hamster, Opossum, Platypus, Lizard, Xenopus (85%). Type of Immunogen: Synthetic peptide
Isotype:	IgG
Specificity:	Human RACGAP1
Predicted Reactivity:	Percent identity by BLAST analysis: Human, Dog, Bovine, Rabbit, Horse (100%) Mouse, Rat, Xenopus (85%).
Purification:	Protein A purified

Target Details

Target:	RACGAP1
Alternative Name:	RACGAP1 / MGC RacGAP (RACGAP1 Products)
Background:	Name/Gene ID: RACGAP1 Synonyms: RACGAP1, GTPase activating protein, ID-GAP, KIAA1478, MgcRacGAP, Protein CYK4 homolog, Male germ cell RacGap, CYK4, HsCYK-4
Gene ID:	29127
NCBI Accession:	NP_037409
UniProt:	Q9H0H5
Pathways:	Regulation of Actin Filament Polymerization , Myometrial Relaxation and Contraction , Regulation of G-Protein Coupled Receptor Protein Signaling , Signaling of Hepatocyte Growth Factor Receptor

Application Details

Application Notes:	Approved: WB (1.25 µg/mL)
Comment:	Target Species of Antibody: Human
Restrictions:	For Research Use only

Handling

Format:	Lyophilized
Reconstitution:	After adding water, will consist of PBS buffer with 2 % sucrose
Concentration:	Lot specific
Buffer:	Lyophilized from PBS with 2 % sucrose
Handling Advice:	Avoid repeat freeze-thaw cycles.
Storage:	4 °C, -20 °C
Storage Comment:	Long term: -20°C, the use of 50% glycerol is recommended if storing aliquots in -20°C for long term use (up to 1 year) Short term (less than 1 week): 4°C. Avoid freeze-thaw cycles.

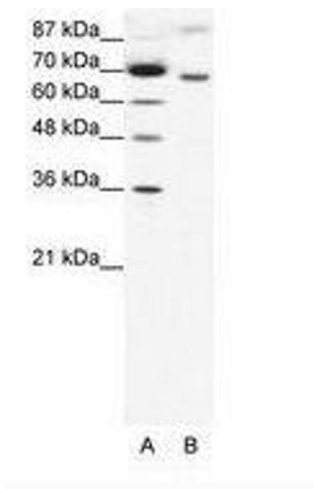


Image 1.