



[Go to Product page](#)

Datasheet for ABIN202857
anti-TRMT1 antibody (AA 418-467)

1 Image

Overview

Quantity:	100 µL
Target:	TRMT1
Binding Specificity:	AA 418-467
Reactivity:	Human, Mouse, Rat, Cow, Dog, Rabbit, Horse, Guinea Pig, Pig, Zebrafish (Danio rerio), Bat, Monkey
Host:	Rabbit
Clonality:	Polyclonal
Conjugate:	This TRMT1 antibody is un-conjugated
Application:	Western Blotting (WB)

Product Details

Immunogen:	Synthetic peptide located between aa418-467 of human TRMT1 (Q9NXH9, NP_060192). Percent identity by BLAST analysis: Human, Chimpanzee, Gorilla, Monkey, Marmoset, Mouse, Rat, Elephant, Dog, Bovine, Bat, Rabbit, Horse, Pig, Opossum, Guinea pig (100%), Galago, Xenopus (92%), Salmon (85%). Type of Immunogen: Synthetic peptide
Isotype:	IgG
Specificity:	Human TRMT1
Predicted Reactivity:	Percent identity by BLAST analysis: Human, Mouse, Rat, Dog, Bovine, Mosquito (100%) Xenopus, Zebrafish (92%) Salmon (85%) Pufferfish (84%).

Product Details

Purification: Protein A purified

Target Details

Target: TRMT1

Alternative Name: TRMT1 ([TRMT1 Products](#))

Background: Name/Gene ID: TRMT1

Synonyms: TRMT1, TRM1

Gene ID: 55621

NCBI Accession: [NP_060192](#)

UniProt: [Q9NXH9](#)

Pathways: [SARS-CoV-2 Protein Interactome](#)

Application Details

Application Notes: Approved: WB (2.5 µg/mL)

Comment: Target Species of Antibody: Human

Restrictions: For Research Use only

Handling

Format: Lyophilized

Reconstitution: After adding water, will consist of PBS buffer with 2 % sucrose

Concentration: Lot specific

Buffer: Lyophilized from PBS with 2 % sucrose

Handling Advice: Avoid repeat freeze-thaw cycles.

Storage: 4 °C, -20 °C

Storage Comment: Long term: -20°C, the use of 50% glycerol is recommended if storing aliquots in -20°C for long term use (up to 1 year)

Short term (less than 1 week): 4°C. Avoid freeze-thaw cycles.

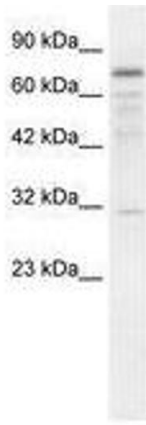


Image 1.