



Datasheet for ABIN202867
anti-FOXP1 antibody (AA 223-270)



[Go to Product page](#)

3 Images

Overview

Quantity:	100 µL
Target:	FOXP1
Binding Specificity:	AA 223-270
Reactivity:	Human, Mouse, Rat, Rabbit, Dog, Horse, Monkey, Guinea Pig
Host:	Rabbit
Clonality:	Polyclonal
Conjugate:	This FOXP1 antibody is un-conjugated
Application:	Western Blotting (WB), Immunohistochemistry (IHC), Immunohistochemistry (Paraffin-embedded Sections) (IHC (p))

Product Details

Immunogen:	Synthetic peptide located between aa223-270 of human FOXP1 (Q9H334, NP_116071). Percent identity by BLAST analysis: Human, Chimpanzee, Gorilla, Gibbon, Monkey, Galago, Marmoset, Mouse, Rat, Elephant, Rabbit, Horse, Guinea pig (100%), Bovine, Bat, Pig (92%), Platypus (91%), Turkey, Zebra finch, Chicken (90%), Dog (84%). Type of Immunogen: Synthetic peptide
Isotype:	IgG
Specificity:	Human FOXP1
Predicted Reactivity:	Percent identity by BLAST analysis: Human, Mouse, Rat, Rabbit, Horse, Guinea pig (100%) Bovine, Pig (92%) Chicken (90%) Dog (84%).

Product Details

Purification: Protein A purified

Target Details

Target: FOXP1

Alternative Name: FOXP1 ([FOXP1 Products](#))

Background: Name/Gene ID: FOXP1
Family: Transcription factor

Synonyms: FOXP1, 12CC4, Glutamine-rich factor 1, HFKH1B, HSPC215, Forkhead box P1, Forkhead box protein P1, QRF1

Gene ID: 27086

NCBI Accession: [NP_116071](#)

UniProt: [Q9H334](#)

Pathways: [Chromatin Binding](#), [Regulation of Muscle Cell Differentiation](#), [Positive Regulation of Immune Effector Process](#), [Production of Molecular Mediator of Immune Response](#)

Application Details

Application Notes: Approved: IHC, IHC-P, WB (0.5 µg/mL)

Comment: Target Species of Antibody: Human

Restrictions: For Research Use only

Handling

Format: Lyophilized

Reconstitution: Reconstitute with 100 µL sterile ddH2O

Concentration: Lot specific

Buffer: Lyophilized from PBS with 2 % sucrose

Handling Advice: Avoid repeat freeze-thaw cycles.

Storage: 4 °C, -20 °C

Storage Comment: Long term: -20°C, the use of 50% glycerol is recommended if storing aliquots in -20°C for long term use (up to 1 year)

Short term (less than 1 week): 4°C. Avoid freeze-thaw cycles.

Images

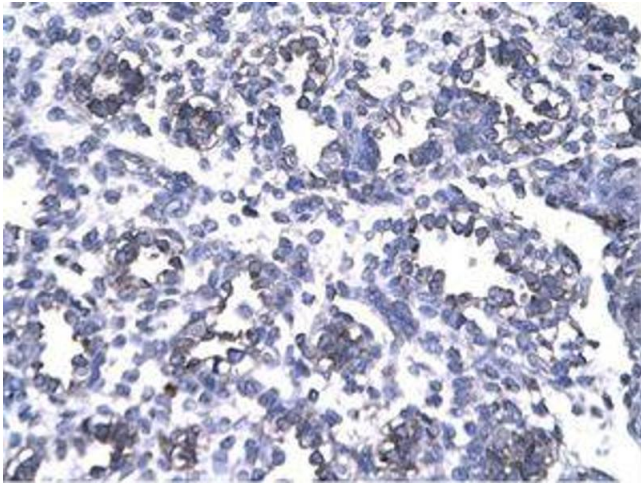


Image 1.



Image 2.

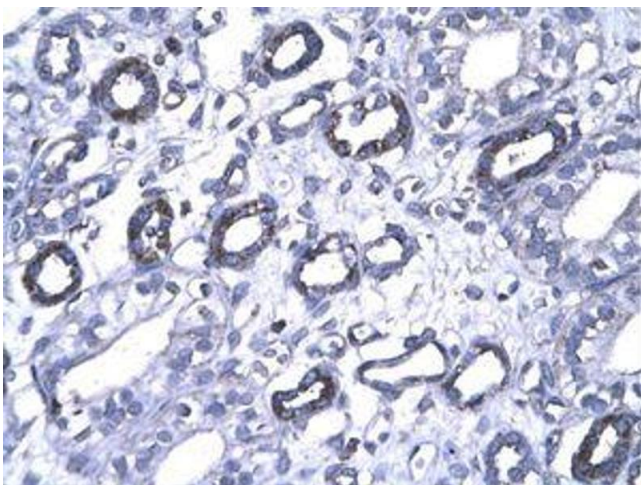


Image 3.