



Datasheet for ABIN202876
anti-L3MBTL2 antibody (AA 576-625)



[Go to Product page](#)

2 Images

Overview

Quantity:	100 µL
Target:	L3MBTL2
Binding Specificity:	AA 576-625
Reactivity:	Human, Rat, Dog, Cow, Horse, Guinea Pig, Rabbit, Monkey
Host:	Rabbit
Clonality:	Polyclonal
Conjugate:	This L3MBTL2 antibody is un-conjugated
Application:	Western Blotting (WB), Immunohistochemistry (IHC), Immunohistochemistry (Paraffin-embedded Sections) (IHC (p))

Product Details

Immunogen:	Synthetic peptide located between aa576-625 of human L3MBTL2 (Q969R5, NP_113676). Percent identity by BLAST analysis: Human, Chimpanzee, Gorilla, Orangutan, Gibbon, Monkey, Galago, Marmoset, Dog, Bovine, Rabbit, Horse, Guinea pig (100%), Bat, Pig (92%), Elephant (85%), Rat (78%). Type of Immunogen: Synthetic peptide
Isotype:	IgG
Specificity:	Human L3MBTL2
Predicted Reactivity:	Percent identity by BLAST analysis: Dog, Rabbit, Guinea pig (100%) Pig (92%).
Purification:	Protein A purified

Target Details

Target:	L3MBTL2
Alternative Name:	L3MBTL2 (L3MBTL2 Products)
Background:	Name/Gene ID: L3MBTL2 Synonyms: L3MBTL2, DJ756G23.3, H-I(3)mbt-I, H-I(3)mbt-like protein 2, L(3)mbt-like 2 (Drosophila), DKFZP7611141, L(3)mbt-like protein 2, L3MBT
Gene ID:	83746
NCBI Accession:	NP_113676
UniProt:	Q969R5

Application Details

Application Notes:	Approved: IHC, IHC-P, WB (0.62 µg/mL)
Comment:	Target Species of Antibody: Human
Restrictions:	For Research Use only

Handling

Format:	Lyophilized
Reconstitution:	After adding water, will consist of PBS buffer with 2 % sucrose
Concentration:	Lot specific
Buffer:	Lyophilized from PBS with 2 % sucrose
Handling Advice:	Avoid repeat freeze-thaw cycles.
Storage:	4 °C, -20 °C
Storage Comment:	Long term: -20°C, the use of 50% glycerol is recommended if storing aliquots in -20°C for long term use (up to 1 year) Short term (less than 1 week): 4°C. Avoid freeze-thaw cycles.

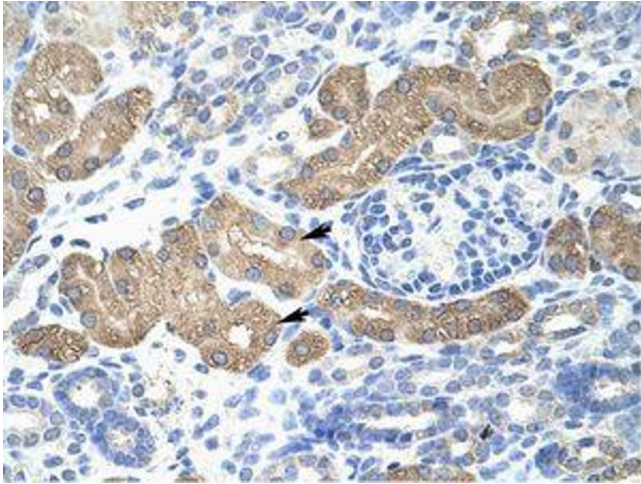


Image 1.



Image 2.