



[Go to Product page](#)

Datasheet for ABIN202909

anti-TSC22D2 antibody (C-Term)

1 Image

Overview

Quantity:	100 µL
Target:	TSC22D2
Binding Specificity:	C-Term
Reactivity:	Human, Dog, Rabbit, Monkey
Host:	Rabbit
Clonality:	Polyclonal
Conjugate:	This TSC22D2 antibody is un-conjugated
Application:	Western Blotting (WB)

Product Details

Immunogen:	Synthetic peptide from C-Terminus of human TSC22D2 (075157, NP_055594). Percent identity by BLAST analysis: Human, Chimpanzee, Gorilla, Monkey, Marmoset (100%), Gibbon, Galago, Mouse, Rat, Hamster, Panda, Bovine, Bat, Horse, Pig, Platypus (92%), Dog, Rabbit, Guinea pig, Lizard (84%). Type of Immunogen: Synthetic peptide
Isotype:	IgG
Specificity:	Human TSC22D2
Predicted Reactivity:	Percent identity by BLAST analysis: Human (100%) Mouse, Rat, Bovine, Horse, Pig (92%) Dog, Rabbit (84%).
Purification:	Protein A purified

Target Details

Target:	TSC22D2
Alternative Name:	TSC22D2 (TSC22D2 Products)
Background:	Name/Gene ID: TSC22D2 Synonyms: TSC22D2, KIAA0669, TSC22 domain family, member 2, TILZ4b, TILZ4c, TSC22 domain family 2, TSC22 domain family protein 2, TILZ4, TILZ4a
Gene ID:	9819
NCBI Accession:	NP_055594
UniProt:	O75157

Application Details

Application Notes:	Approved: WB (2.5 µg/mL)
Comment:	Target Species of Antibody: Human
Restrictions:	For Research Use only

Handling

Format:	Lyophilized
Reconstitution:	After adding water, will consist of PBS buffer with 2 % sucrose
Concentration:	Lot specific
Buffer:	Lyophilized from PBS with 2 % sucrose
Handling Advice:	Avoid repeat freeze-thaw cycles.
Storage:	4 °C, -20 °C
Storage Comment:	Long term: -20°C, the use of 50% glycerol is recommended if storing aliquots in -20°C for long term use (up to 1 year) Short term (less than 1 week): 4°C. Avoid freeze-thaw cycles.

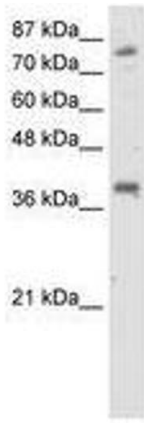


Image 1.