

Datasheet for ABIN202929
anti-ZHX2 antibody (C-Term)



[Go to Product page](#)

1 Image

Overview

Quantity:	100 µL
Target:	ZHX2
Binding Specificity:	C-Term
Reactivity:	Human, Rat, Mouse, Dog, Rabbit, Cow, Horse
Host:	Rabbit
Clonality:	Polyclonal
Conjugate:	This ZHX2 antibody is un-conjugated
Application:	Western Blotting (WB)

Product Details

Immunogen:	Synthetic peptide from C-Terminus of mouse ZHX2 (Q8C0C0, NP_955520). Percent identity by BLAST analysis: Mouse, Rat (100%), Elephant, Bat (92%), Dog, Bovine, Rabbit (85%), Hamster (84%), Human (78%). Type of Immunogen: Synthetic peptide
Isotype:	IgG
Specificity:	Mouse ZHX2
Predicted Reactivity:	Percent identity by BLAST analysis: Mouse, Rat (100%) Dog, Bovine, Rabbit (85%).
Purification:	Protein A purified

Target Details

Target:	ZHX2
Alternative Name:	ZHX2 / RAF (ZHX2 Products)
Background:	Name/Gene ID: ZHX2 Synonyms: ZHX2, AFR1, Alpha-fetoprotein regulator 1, AFP regulator 1, KIAA0854, Regulator of AFP, Transcription factor ZHX2, Zinc fingers and homeoboxes 2, Zinc-fingers and homeoboxes 2, RAF
Gene ID:	22882
NCBI Accession:	NP_955520
UniProt:	Q9Y6X8
Pathways:	Stem Cell Maintenance

Application Details

Application Notes:	Approved: WB (2.5 µg/mL)
Comment:	Target Species of Antibody: Mouse
Restrictions:	For Research Use only

Handling

Format:	Lyophilized
Reconstitution:	After adding water, will consist of PBS buffer with 2 % sucrose
Concentration:	Lot specific
Buffer:	Lyophilized from PBS with 2 % sucrose
Handling Advice:	Avoid repeat freeze-thaw cycles.
Storage:	4 °C, -20 °C
Storage Comment:	Long term: -20°C, the use of 50% glycerol is recommended if storing aliquots in -20°C for long term use (up to 1 year) Short term (less than 1 week): 4°C. Avoid freeze-thaw cycles.

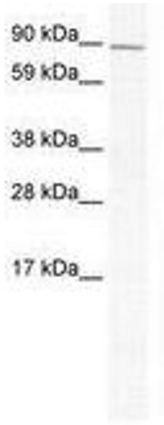


Image 1.