

Datasheet for ABIN202931  
**anti-KIFC2 antibody (AA 150-199)**



[Go to Product page](#)

2 Images

## Overview

Quantity:	100 µL
Target:	KIFC2
Binding Specificity:	AA 150-199
Reactivity:	Human, Cow, Horse, Mouse
Host:	Rabbit
Clonality:	Polyclonal
Conjugate:	This KIFC2 antibody is un-conjugated
Application:	Western Blotting (WB), Immunohistochemistry (IHC), Immunohistochemistry (Paraffin-embedded Sections) (IHC (p))

## Product Details

Immunogen:	Synthetic peptide located between aa150-199 of human KIFC2 (Q96AC6, NP_665697). Percent identity by BLAST analysis: Human, Chimpanzee, Gorilla (100%), Gibbon (92%), Monkey, Bovine, Horse (85%), Mouse (78%).  Type of Immunogen: Synthetic peptide
Isotype:	IgG
Specificity:	Human KIFC2
Predicted Reactivity:	Percent identity by BLAST analysis: Human (100%) Bovine, Horse (85%).
Purification:	Protein A purified

## Target Details

---

Target:	KIFC2
Alternative Name:	KIFC2 / Kinesin C2 ( <a href="#">KIFC2 Products</a> )
Background:	Name/Gene ID: KIFC2  Synonyms: KIFC2, Kinesin C2, Kinesin family member C2, Kinesin-like protein KIFC2
Gene ID:	90990
NCBI Accession:	<a href="#">NP_665697</a>
UniProt:	<a href="#">Q96AC6</a>

## Application Details

---

Application Notes:	Approved: IHC, IHC-P, WB (1.25 µg/mL)
Comment:	Target Species of Antibody: Human
Restrictions:	For Research Use only

## Handling

---

Format:	Lyophilized
Reconstitution:	After adding water, will consist of PBS buffer with 2 % sucrose
Concentration:	Lot specific
Buffer:	Lyophilized from PBS with 2 % sucrose
Handling Advice:	Avoid repeat freeze-thaw cycles.
Storage:	4 °C, -20 °C
Storage Comment:	Long term: -20°C, the use of 50% glycerol is recommended if storing aliquots in -20°C for long term use (up to 1 year)  Short term (less than 1 week): 4°C. Avoid freeze-thaw cycles.

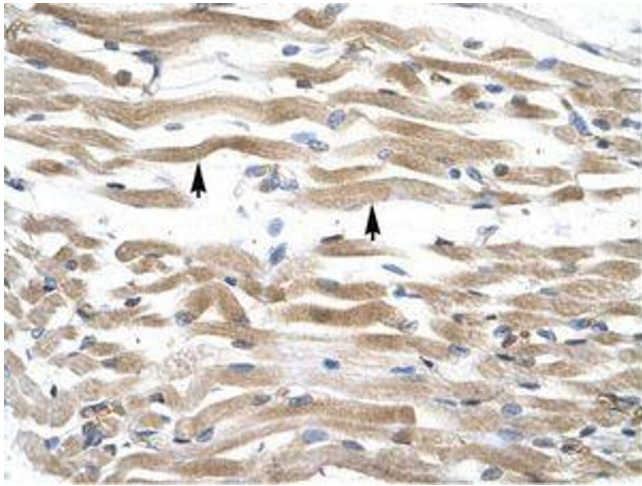


Image 1.

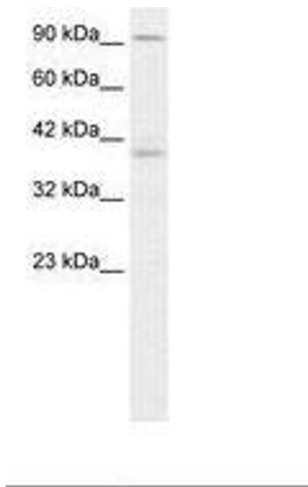


Image 2.