

Datasheet for ABIN202961  
**anti-KCNH6 antibody (AA 173-222)**[Go to Product page](#)

## 2 Images

## Overview

Quantity:	100 µL
Target:	KCNH6
Binding Specificity:	AA 173-222
Reactivity:	Human, Rat, Mouse, Dog, Cow, Horse, Rabbit, Guinea Pig, Pig, Bat, Chicken, Monkey
Host:	Rabbit
Clonality:	Polyclonal
Conjugate:	This KCNH6 antibody is un-conjugated
Application:	Western Blotting (WB), Immunohistochemistry (IHC), Immunohistochemistry (Paraffin-embedded Sections) (IHC (p))

## Product Details

Immunogen:	Synthetic peptide located between aa173-222 of human KCNH6 (Q9H252-3, NP_110406). Percent identity by BLAST analysis: Human, Chimpanzee, Gorilla, Gibbon, Monkey, Galago, Marmoset, Mouse, Rat, Elephant, Dog, Bovine, Bat, Rabbit, Horse, Pig, Opossum, Guinea pig, Turkey, Zebra finch, Chicken, Lizard (100%), Trout (84%).  Type of Immunogen: Synthetic peptide
Isotype:	IgG
Specificity:	Human KCNH6 / Kv11.2
Predicted Reactivity:	Percent identity by BLAST analysis: Human, Mouse, Rat, Dog, Bovine, Rabbit, Horse, Pig, Guinea pig, Chicken (100%).

## Product Details

Purification: Protein A purified

## Target Details

Target: KCNH6

Alternative Name: KCNH6 / Kv11.2 / ERG2 ([KCNH6 Products](#))

Background: Name/Gene ID: KCNH6  
Subfamily: Potassium channel - Eag-related  
Family: Ion Channel  
  
Synonyms: KCNH6, Eag related protein 2, Eag-related gene member 2, ERG-2, Eag-related protein 2, ERG2, HERG-2, HERG2, Kv11.2

Gene ID: 81033

NCBI Accession: [NP\\_110406](#)

UniProt: [Q9H252](#)

## Application Details

Application Notes: Approved: IHC, IHC-P, WB (1.25 µg/mL)

Comment: Target Species of Antibody: Human

Restrictions: For Research Use only

## Handling

Format: Lyophilized

Reconstitution: After adding water, will consist of PBS buffer with 2 % sucrose

Concentration: Lot specific

Buffer: Lyophilized from PBS with 2 % sucrose

Handling Advice: Avoid repeat freeze-thaw cycles.

Storage: 4 °C, -20 °C

Storage Comment: Long term: -20°C, the use of 50% glycerol is recommended if storing aliquots in -20°C for long term use (up to 1 year)  
Short term (less than 1 week): 4°C. Avoid freeze-thaw cycles.

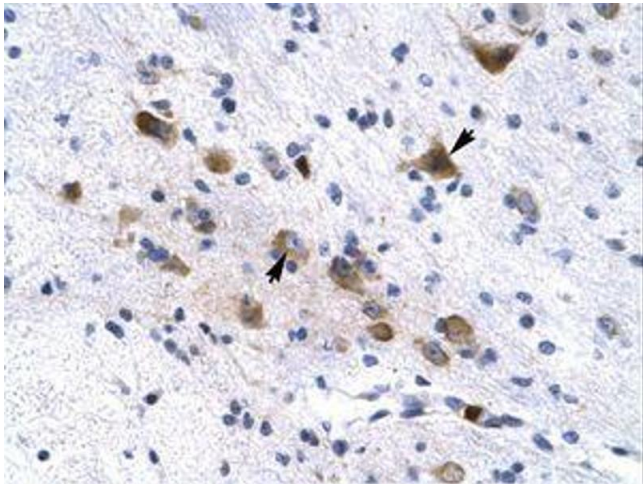


Image 1.

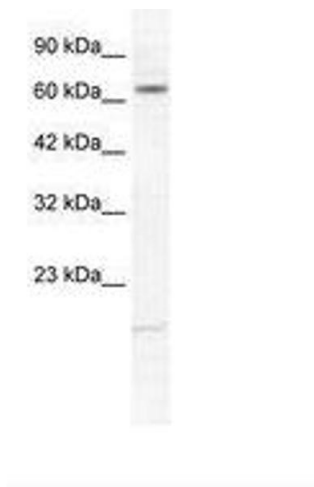


Image 2.