



[Go to Product page](#)

Datasheet for ABIN202973  
**anti-GLI1 antibody (N-Term)**

1 Image

Overview

Quantity:	100 µL
Target:	GLI1
Binding Specificity:	N-Term
Reactivity:	Human, Guinea Pig, Horse, Rabbit, Monkey, Bat
Host:	Rabbit
Clonality:	Polyclonal
Conjugate:	This GLI1 antibody is un-conjugated
Application:	Western Blotting (WB)

Product Details

Immunogen:	Synthetic peptide from N-Terminus of human GLI1 (P08151, NP_005260). Percent identity by BLAST analysis: Human, Chimpanzee, Monkey, Marmoset, Panda, Bat, Rabbit, Horse (100%), Gibbon, Galago, Dog, Bovine (92%), Guinea pig (85%), Elephant (84%).  Type of Immunogen: Synthetic peptide
Isotype:	IgG
Specificity:	Human GLI1
Predicted Reactivity:	Percent identity by BLAST analysis: Human, Rabbit, Horse (100%) Dog, Bovine (92%) Guinea pig (85%).
Purification:	Protein A purified

## Target Details

---

Target:	GLI1
Alternative Name:	GLI / GLI1 ( <a href="#">GLI1 Products</a> )
Background:	Name/Gene ID: GLI1  Synonyms: GLI1, Gli-1, GLI family zinc finger 1, Glioma-associated oncogene, Glioma-associated oncogene 1, Oncogene GLI, GLI, Zinc finger protein GLI1
Gene ID:	2735
NCBI Accession:	<a href="#">NP_005260</a>
UniProt:	<a href="#">P08151</a>
Pathways:	<a href="#">Hedgehog Signaling</a> , <a href="#">Dopaminergic Neurogenesis</a>

## Application Details

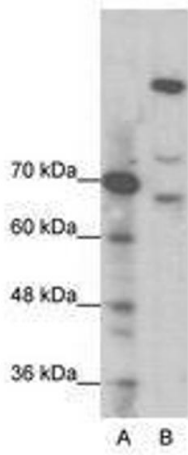
---

Application Notes:	Approved: WB (1.25 µg/mL)
Comment:	Target Species of Antibody: Human
Restrictions:	For Research Use only

## Handling

---

Format:	Lyophilized
Reconstitution:	After adding water, will consist of PBS buffer with 2 % sucrose
Concentration:	Lot specific
Buffer:	Lyophilized.
Handling Advice:	Avoid repeat freeze-thaw cycles.
Storage:	4 °C,-20 °C
Storage Comment:	Long term: -20°C, the use of 50% glycerol is recommended if storing aliquots in -20°C for long term use (up to 1 year)  Short term (less than 1 week): 4°C. Avoid freeze-thaw cycles.



**Image 1.**