



[Go to Product page](#)

Datasheet for ABIN202974
anti-GLI1 antibody (AA 1007-1056)

1 Image

Overview

Quantity:	100 µL
Target:	GLI1
Binding Specificity:	AA 1007-1056
Reactivity:	Human, Pig, Dog, Guinea Pig, Horse, Rabbit, Cow, Monkey, Bat
Host:	Rabbit
Clonality:	Polyclonal
Conjugate:	This GLI1 antibody is un-conjugated
Application:	Western Blotting (WB)

Product Details

Immunogen:	Synthetic peptide located between aa1007-1056 of human GLI1 (P08151, NP_005260). Percent identity by BLAST analysis: Human, Chimpanzee, Gorilla, Gibbon, Monkey, Marmoset, Dog, Bovine, Bat, Rabbit, Horse, Pig, Guinea pig (100%), Galago, Mouse, Rat, Hamster, Elephant, Panda (92%). Type of Immunogen: Synthetic peptide
Isotype:	IgG
Specificity:	Human GLI1
Predicted Reactivity:	Percent identity by BLAST analysis: Human, Dog, Bovine, Rabbit, Horse, Guinea pig (100%) Mouse, Rat (92%).
Purification:	Protein A purified

Target Details

Target:	GLI1
Alternative Name:	GLI / GLI1 (GLI1 Products)
Background:	Name/Gene ID: GLI1 Synonyms: GLI1, Gli-1, GLI family zinc finger 1, Glioma-associated oncogene, Glioma-associated oncogene 1, Oncogene GLI, GLI, Zinc finger protein GLI1
Gene ID:	2735
NCBI Accession:	NP_005260
UniProt:	P08151
Pathways:	Hedgehog Signaling , Dopaminergic Neurogenesis

Application Details

Application Notes:	Approved: WB (2.5 µg/mL)
Comment:	Target Species of Antibody: Human
Restrictions:	For Research Use only

Handling

Format:	Lyophilized
Reconstitution:	After adding water, will consist of PBS buffer with 2 % sucrose
Concentration:	Lot specific
Buffer:	Lyophilized from PBS with 2 % sucrose
Handling Advice:	Avoid repeat freeze-thaw cycles.
Storage:	4 °C,-20 °C
Storage Comment:	Long term: -20°C, the use of 50% glycerol is recommended if storing aliquots in -20°C for long term use (up to 1 year) Short term (less than 1 week): 4°C. Avoid freeze-thaw cycles.

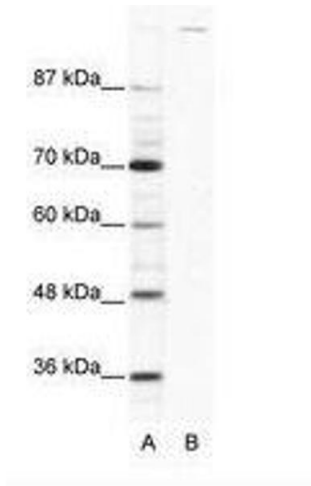


Image 1.