



[Go to Product page](#)

Datasheet for ABIN202989

anti-KDM3B antibody (AA 1691-1740)

1 Image

Overview

Quantity:	100 µL
Target:	KDM3B
Binding Specificity:	AA 1691-1740
Reactivity:	Human, Mouse, Rat, Dog, Cow, Horse, Rabbit, Guinea Pig, Chicken, Monkey, Bat, Pig, Xenopus laevis
Host:	Rabbit
Clonality:	Polyclonal
Conjugate:	This KDM3B antibody is un-conjugated
Application:	Western Blotting (WB)

Product Details

Immunogen:	Synthetic peptide located between aa1691-1740 of human KDM3B (Q7LBC6, NP_057688). Percent identity by BLAST analysis: Human, Chimpanzee, Gorilla, Gibbon, Monkey, Galago, Marmoset, Mouse, Rat, Elephant, Panda, Dog, Bovine, Bat, Rabbit, Horse, Pig, Opossum, Guinea pig, Turkey, Zebra finch, Chicken, Platypus, Lizard, Xenopus, Stickleback (100%), Drosophila (91%). Type of Immunogen: Synthetic peptide
Isotype:	IgG
Specificity:	Human KDM3B / JMJD1B
Predicted Reactivity:	Percent identity by BLAST analysis: Human (100%).

Product Details

Purification: Protein A purified

Target Details

Target: KDM3B

Alternative Name: KDM3B / JMJD1B ([KDM3B Products](#))

Background: Name/Gene ID: KDM3B

Synonyms: KDM3B, 5qNCA, C5orf7, JMJD1B, Jumonji domain containing 1B, KIAA1082, Lysine-specific demethylase 3B, NET22, Nuclear protein 5qNCA, JHDM2B

Gene ID: 51780

NCBI Accession: [NP_057688](#)

UniProt: [Q7LBC6](#)

Pathways: [Warburg Effect](#)

Application Details

Application Notes: Approved: WB (2.5 µg/mL)

Comment: Target Species of Antibody: Human

Restrictions: For Research Use only

Handling

Format: Lyophilized

Reconstitution: After adding water, will consist of PBS buffer with 2 % sucrose

Concentration: Lot specific

Buffer: Lyophilized from PBS with 2 % sucrose

Handling Advice: Avoid repeat freeze-thaw cycles.

Storage: 4 °C, -20 °C

Storage Comment: Long term: -20°C, the use of 50% glycerol is recommended if storing aliquots in -20°C for long term use (up to 1 year)

Short term (less than 1 week): 4°C. Avoid freeze-thaw cycles.

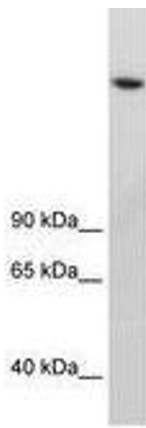


Image 1.