



[Go to Product page](#)

Datasheet for ABIN203013
anti-RPS14 antibody (N-Term)

1 Image

Overview

Quantity:	100 µL
Target:	RPS14
Binding Specificity:	N-Term
Reactivity:	Human, Mouse, Rat, Dog, Zebrafish (Danio rerio), Horse, Rabbit, Guinea Pig, Cow, Chicken, Hamster, Monkey, Xenopus laevis, Pig
Host:	Rabbit
Clonality:	Polyclonal
Conjugate:	This RPS14 antibody is un-conjugated
Application:	Western Blotting (WB)

Product Details

Immunogen:	Synthetic peptide from N-Terminus of human RPS14 (P62263, NP_001020242). Percent identity by BLAST analysis: Human, Chimpanzee, Gorilla, Gibbon, Monkey, Galago, Marmoset, Mouse, Rat, Hamster, Panda, Dog, Bovine, Rabbit, Horse, Pig, Opossum, Guinea pig, Turkey, Zebra finch, Chicken, Platypus, Lizard, Xenopus, Trout, Catfish, Salmon, Stickleback, Pike, Zebrafish (100%). Type of Immunogen: Synthetic peptide
Isotype:	IgG
Specificity:	Human RPS14
Predicted Reactivity:	Percent identity by BLAST analysis: Human, Mouse, Rat, Dog, Bovine, Chicken, Xenopus,

Product Details

Zebrafish (100%).

Purification: Protein A purified

Target Details

Target: RPS14

Alternative Name: RPS14 / S14 ([RPS14 Products](#))

Background: Name/Gene ID: RPS14

Synonyms: RPS14, 40S ribosomal protein S14, EMTB, Ribosomal protein S14, S14, Emetine resistance

Gene ID: 6208

NCBI Accession: [NP_001020242](#)

UniProt: [P62263](#)

Pathways: [Ribonucleoprotein Complex Subunit Organization, Ribosome Assembly](#)

Application Details

Application Notes: Approved: WB (1.25 µg/mL)

Comment: Target Species of Antibody: Human

Restrictions: For Research Use only

Handling

Format: Lyophilized

Reconstitution: After adding water, will consist of PBS buffer with 2 % sucrose

Concentration: Lot specific

Buffer: Lyophilized from PBS with 2 % sucrose

Handling Advice: Avoid repeat freeze-thaw cycles.

Storage: 4 °C, -20 °C

Storage Comment: Long term: -20°C, the use of 50% glycerol is recommended if storing aliquots in -20°C for long term use (up to 1 year)

Handling

Short term (less than 1 week): 4°C. Avoid freeze-thaw cycles.

Images

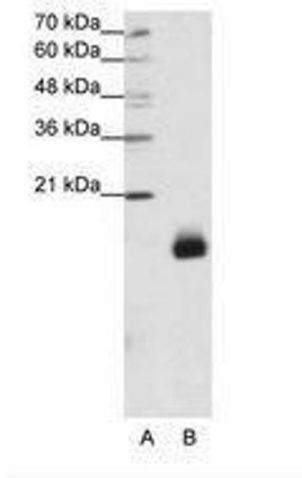


Image 1.