



[Go to Product page](#)

Datasheet for ABIN203029
anti-BTF3 antibody (C-Term)

1 Image

Overview

Quantity:	100 µL
Target:	BTF3
Binding Specificity:	C-Term
Reactivity:	Human, Mouse, Rat, Dog, Zebrafish (Danio rerio), Cow, Guinea Pig, Horse, Rabbit, Xenopus laevis, Monkey, Pig
Host:	Rabbit
Clonality:	Polyclonal
Conjugate:	This BTF3 antibody is un-conjugated
Application:	Western Blotting (WB)

Product Details

Immunogen:	Synthetic peptide from C-Terminus of human BTF3 (P20290, NP_001032726). Percent identity by BLAST analysis: Human, Chimpanzee, Gorilla, Gibbon, Monkey, Marmoset, Mouse, Rat, Elephant, Panda, Dog, Bovine, Rabbit, Horse, Pig, Opossum, Guinea pig, Zebra finch, Platypus, Lizard, Xenopus, Zebrafish (100%), Orangutan, Hamster, Turkey, Chicken, Catfish, Salmon, Smelt, Sablefish, Stickleback, Pike (92%), Drosophila (84%), Frog (83%). Type of Immunogen: Synthetic peptide
Isotype:	IgG
Specificity:	Human BTF3
Predicted Reactivity:	Percent identity by BLAST analysis: Human, Mouse, Rat, Bovine, Rabbit, Horse, Pig, Xenopus,

Product Details

Zebrafish (100%) Dog, Chicken (92%).

Purification: Protein A purified

Target Details

Target: BTF3

Alternative Name: BTF3 ([BTF3 Products](#))

Background: Name/Gene ID: BTF3

Synonyms: BTF3, BTF3a, BTF3b, BTF3P13, BETA-NAC, HUMBTFD, NACB, Transcription factor BTF3, Basic transcription factor 3, BTF3L3

Gene ID: 689

NCBI Accession: [NP_001032726](#)

UniProt: [P20290](#)

Application Details

Application Notes: Approved: WB (1.25 µg/mL)

Comment: Target Species of Antibody: Human

Restrictions: For Research Use only

Handling

Format: Lyophilized

Reconstitution: After adding water, will consist of PBS buffer with 2 % sucrose

Concentration: Lot specific

Buffer: Lyophilized from PBS with 2 % sucrose

Handling Advice: Avoid repeat freeze-thaw cycles.

Storage: 4 °C, -20 °C

Storage Comment: Long term: -20°C, the use of 50% glycerol is recommended if storing aliquots in -20°C for long term use (up to 1 year)

Short term (less than 1 week): 4°C. Avoid freeze-thaw cycles.

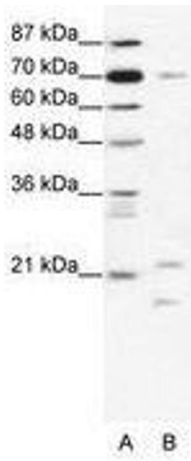


Image 1.