

Datasheet for ABIN203040
anti-ATP7A antibody (C-Term)



[Go to Product page](#)

1 Image

Overview

Quantity:	100 µL
Target:	ATP7A
Binding Specificity:	C-Term
Reactivity:	Human, Dog, Monkey
Host:	Rabbit
Clonality:	Polyclonal
Conjugate:	This ATP7A antibody is un-conjugated
Application:	Western Blotting (WB)

Product Details

Immunogen:	Synthetic peptide from C-Terminus of human ATP7A (Q762B6). Percent identity by BLAST analysis: Human, Gorilla, Gibbon, Monkey, Dolphin, Panda, Dog (100%), Mouse, Cat, Bovine (92%). Type of Immunogen: Synthetic peptide
Isotype:	IgG
Specificity:	Human ATP7A
Predicted Reactivity:	Percent identity by BLAST analysis: Human, Dog (100%) Mouse, Bovine (92%).
Purification:	Protein A purified

Target Details

Target:	ATP7A
Alternative Name:	MNK / ATP7A (ATP7A Products)
Background:	Name/Gene ID: ATP7A Subfamily: ATPase - P type, type IB Family: Transporter Synonyms: ATP7A, Copper pump 1, Menkes disease ATPase, MNK, MK, SMAX3, Menkes syndrome, OHS, Copper-transporting ATPase 1, DSMAX, MC1
Gene ID:	538
UniProt:	Q04656
Pathways:	Transition Metal Ion Homeostasis , Ribonucleoside Biosynthetic Process

Application Details

Application Notes:	Approved: WB (0.5 µg/mL)
Comment:	Target Species of Antibody: Human
Restrictions:	For Research Use only

Handling

Format:	Lyophilized
Reconstitution:	After adding water, will consist of PBS buffer with 2 % sucrose
Concentration:	Lot specific
Buffer:	Lyophilized from PBS with 2 % sucrose
Handling Advice:	Avoid repeat freeze-thaw cycles.
Storage:	4 °C, -20 °C
Storage Comment:	Long term: -20°C, the use of 50% glycerol is recommended if storing aliquots in -20°C for long term use (up to 1 year) Short term (less than 1 week): 4°C. Avoid freeze-thaw cycles.

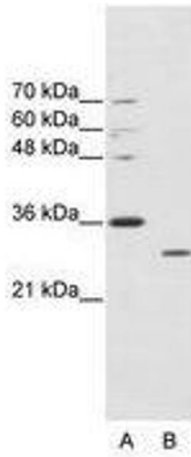


Image 1.