



[Go to Product page](#)

Datasheet for ABIN203042  
**anti-ZNF227 antibody (AA 301-350)**

1 Image

Overview

Quantity:	100 µL
Target:	ZNF227
Binding Specificity:	AA 301-350
Reactivity:	Human
Host:	Rabbit
Clonality:	Polyclonal
Conjugate:	This ZNF227 antibody is un-conjugated
Application:	Western Blotting (WB)

Product Details

Immunogen:	Synthetic peptide located between aa301-350 of human ZNF227 (Q86WM4). Percent identity by BLAST analysis: Human, Chimpanzee, Monkey (100%), Gorilla, Gibbon, Marmoset (92%), Galago (85%).  Type of Immunogen: Synthetic peptide
Isotype:	IgG
Specificity:	Human ZNF227
Predicted Reactivity:	Percent identity by BLAST analysis: Human (100%).
Purification:	Protein A purified

## Target Details

---

Target:	ZNF227
Alternative Name:	ZNF227 ( <a href="#">ZNF227 Products</a> )
Background:	Name/Gene ID: ZNF227 Family: Zinc Finger  Synonyms: ZNF227, Zinc finger protein 227
Gene ID:	7770
UniProt:	<a href="#">Q86WZ6</a>

## Application Details

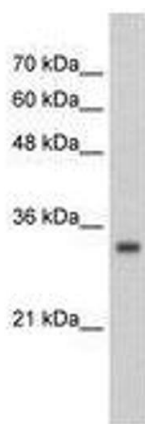
---

Application Notes:	Approved: WB (2.5 µg/mL)
Comment:	Target Species of Antibody: Human
Restrictions:	For Research Use only

## Handling

---

Format:	Lyophilized
Reconstitution:	After adding water, will consist of PBS buffer with 2 % sucrose
Concentration:	Lot specific
Buffer:	Lyophilized from PBS with 2 % sucrose
Handling Advice:	Avoid repeat freeze-thaw cycles.
Storage:	4 °C, -20 °C
Storage Comment:	Long term: -20°C, the use of 50% glycerol is recommended if storing aliquots in -20°C for long term use (up to 1 year) Short term (less than 1 week): 4°C. Avoid freeze-thaw cycles.



**Image 1.**