

Datasheet for ABIN203052

anti-SUPT3H/SPT3 antibody (AA 87-136)



[Go to Product page](#)

2 Images

Overview

Quantity:	100 µL
Target:	SUPT3H/SPT3 (SUPT3H)
Binding Specificity:	AA 87-136
Reactivity:	Human, Dog, Cow, Goat, Guinea Pig, Horse, Pig, Rabbit, Bat, Monkey
Host:	Rabbit
Clonality:	Polyclonal
Conjugate:	This SUPT3H/SPT3 antibody is un-conjugated
Application:	Western Blotting (WB), Immunohistochemistry (IHC), Immunohistochemistry (Paraffin-embedded Sections) (IHC (p))

Product Details

Immunogen:	Synthetic peptide located between aa87-136 of human SUPT3H (075486, NP_003590). Percent identity by BLAST analysis: Human, Chimpanzee, Gorilla, Gibbon, Monkey, Galago, Marmoset, Dog, Bovine, Bat, Goat, Elephant, Panda, Horse, Pig (100%), Mouse, Rat, Opossum, Turkey, Zebra finch, Chicken (92%), Rabbit, Guinea pig, Sparrow, Platypus, Lizard (85%), Xenopus (83%). Type of Immunogen: Synthetic peptide
Isotype:	IgG
Specificity:	Human SUPT3H / SPT3
Predicted Reactivity:	Percent identity by BLAST analysis: Human, Dog, Bovine, Goat, Horse, Pig (100%) Mouse, Rat, Chicken (92%) Rabbit, Guinea pig (85%) Xenopus (83%).

Product Details

Purification: Protein A purified

Target Details

Target: SUPT3H/SPT3 (SUPT3H)

Alternative Name: SPT3 / SUPT3H ([SUPT3H Products](#))

Background: Name/Gene ID: SUPT3H

Synonyms: SUPT3H, SPT3, SPT3-like protein, SPT3L

Gene ID: 8464

NCBI Accession: [NP_003590](#)

UniProt: [O75486](#)

Application Details

Application Notes: Approved: IHC, IHC-P, WB (0.4 µg/mL)

Comment: Target Species of Antibody: Human

Restrictions: For Research Use only

Handling

Format: Lyophilized

Reconstitution: After adding water, will consist of PBS buffer with 2 % sucrose

Concentration: Lot specific

Buffer: Lyophilized from PBS with 2 % sucrose

Handling Advice: Avoid repeat freeze-thaw cycles.

Storage: 4 °C, -20 °C

Storage Comment: Long term: -20°C, the use of 50% glycerol is recommended if storing aliquots in -20°C for long term use (up to 1 year)
Short term (less than 1 week): 4°C. Avoid freeze-thaw cycles.

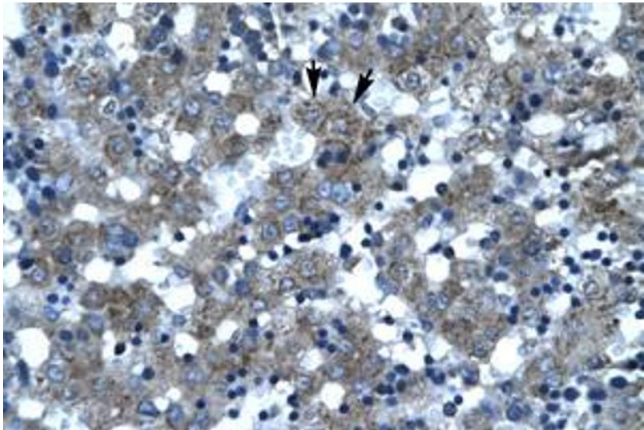


Image 1.

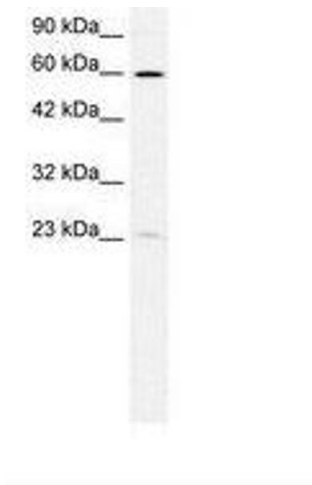


Image 2.