



Datasheet for ABIN203068  
**anti-ADAT1 antibody (AA 390-439)**



[Go to Product page](#)

2 Images

Overview

Quantity:	100 µL
Target:	ADAT1
Binding Specificity:	AA 390-439
Reactivity:	Human, Mouse, Rat, Dog, Horse, Guinea Pig, Cow, Rabbit, Zebrafish (Danio rerio), Pig
Host:	Rabbit
Clonality:	Polyclonal
Conjugate:	This ADAT1 antibody is un-conjugated
Application:	Western Blotting (WB), Immunohistochemistry (IHC), Immunohistochemistry (Paraffin-embedded Sections) (IHC (p))

Product Details

Immunogen:	Synthetic peptide located between aa390-439 of human ADAT1 (Q9NVB7). Percent identity by BLAST analysis: Human, Chimpanzee, Gorilla, Gibbon, Monkey, Galago, Mouse, Rat, Elephant, Dog, Bovine, Rabbit, Horse, Pig, Guinea pig (100%), Marmoset, Hamster, Panda (92%).  Type of Immunogen: Synthetic peptide
Isotype:	IgG
Specificity:	Human ADAT1
Predicted Reactivity:	Percent identity by BLAST analysis: Human, Mouse, Rat, Dog, Bovine, Rabbit, Horse, Pig (100%).
Purification:	Protein A purified

## Target Details

---

Target:	ADAT1
Alternative Name:	ADAT1 ( <a href="#">ADAT1 Products</a> )
Background:	Name/Gene ID: ADAT1  Synonyms: ADAT1, HADAT1
Gene ID:	23536
UniProt:	<a href="#">Q9BUB4</a>

## Application Details

---

Application Notes:	Approved: IHC, IHC-P, WB (1.25 µg/mL)
Comment:	Target Species of Antibody: Human
Restrictions:	For Research Use only

## Handling

---

Format:	Lyophilized
Reconstitution:	After adding water, will consist of PBS buffer with 2 % sucrose
Concentration:	Lot specific
Buffer:	Lyophilized from PBS with 2 % sucrose
Handling Advice:	Avoid repeat freeze-thaw cycles.
Storage:	4 °C,-20 °C
Storage Comment:	Long term: -20°C, the use of 50% glycerol is recommended if storing aliquots in -20°C for long term use (up to 1 year)  Short term (less than 1 week): 4°C. Avoid freeze-thaw cycles.

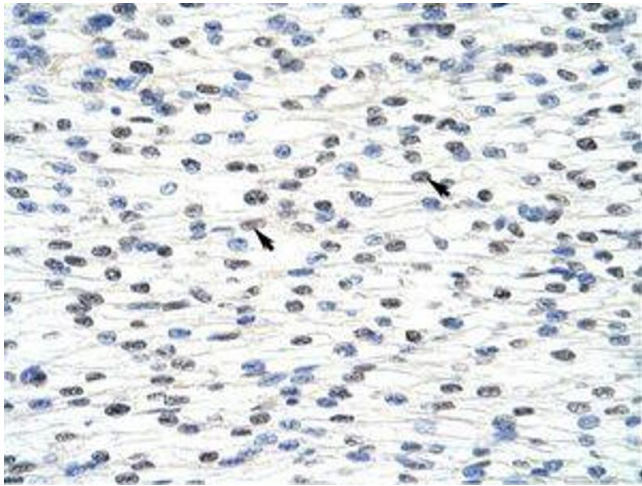


Image 1.

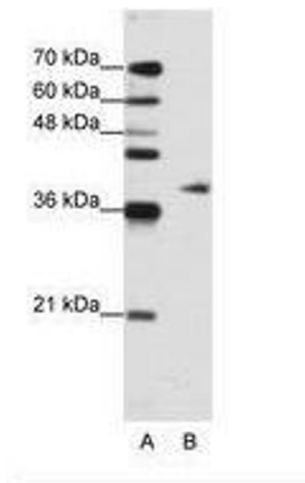


Image 2.