



[Go to Product page](#)

Datasheet for ABIN203101
anti-OLA1 antibody (AA 159-208)

2 Images

Overview

| | |
|----------------------|--|
| Quantity: | 100 µL |
| Target: | OLA1 |
| Binding Specificity: | AA 159-208 |
| Reactivity: | Human, Mouse, Rat, Dog, Cow, Guinea Pig, Horse, Rabbit, Monkey, Pig, Chicken, Xenopus laevis |
| Host: | Rabbit |
| Clonality: | Polyclonal |
| Conjugate: | This OLA1 antibody is un-conjugated |
| Application: | Western Blotting (WB), Immunohistochemistry (IHC), Immunohistochemistry (Paraffin-embedded Sections) (IHC (p)) |

Product Details

| | |
|-----------------------|---|
| Immunogen: | Synthetic peptide located between aa159-208 of human OLA1 (Q9NTK5, NP_037473). Percent identity by BLAST analysis: Human, Chimpanzee, Gorilla, Orangutan, Gibbon, Monkey, Galago, Marmoset, Mouse, Rat, Elephant, Dog, Bovine, Rabbit, Horse, Pig, Opossum, Guinea pig, Turkey, Zebra finch, Chicken, Platypus, Xenopus (100%), Salmon, Smelt, Zebrafish (92%), Drosophila (85%). Type of Immunogen: Synthetic peptide |
| Specificity: | Human OLA1 / GTPBP9 |
| Predicted Reactivity: | Percent identity by BLAST analysis: Human, Orangutan, Mouse, Rat, Bovine, Chicken, Xenopus, Pufferfish (100%) Salmon, Smelt, Zebrafish (92%) Drosophila (85%). |

Product Details

Purification: Protein A/G purified

Target Details

Target: OLA1

Alternative Name: OLA1 ([OLA1 Products](#))

Background: Name/Gene ID: OLA1

Synonyms: OLA1, DOC45, GTBP9, GTPBP9, GBP45, GTP-binding protein PTD004, Homologous yeast-44.2 protein, GTP-binding protein 9, Obg-like ATPase 1, PTD004

Gene ID: 29789

NCBI Accession: [NP_037473](#)

UniProt: [Q9NTK5](#)

Application Details

Application Notes: Approved: IHC, IHC-P, WB (1.25 µg/mL)

Comment: Target Species of Antibody: Human

Restrictions: For Research Use only

Handling

Format: Lyophilized

Reconstitution: After adding water, will consist of PBS buffer with 2 % sucrose

Concentration: Lot specific

Buffer: Lyophilized from PBS with 2 % sucrose

Handling Advice: Avoid repeat freeze-thaw cycles.

Storage: 4 °C, -20 °C

Storage Comment: Long term: -20°C, the use of 50% glycerol is recommended if storing aliquots in -20°C for long term use (up to 1 year)

Short term (less than 1 week): 4°C. Avoid freeze-thaw cycles.

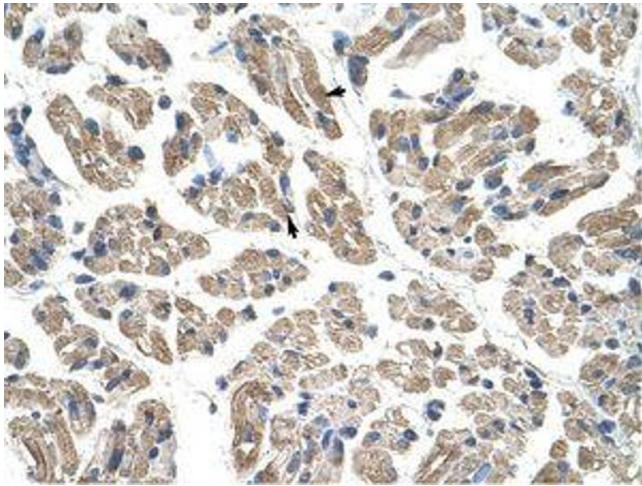


Image 1.

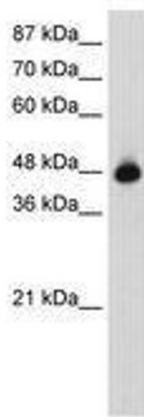


Image 2.